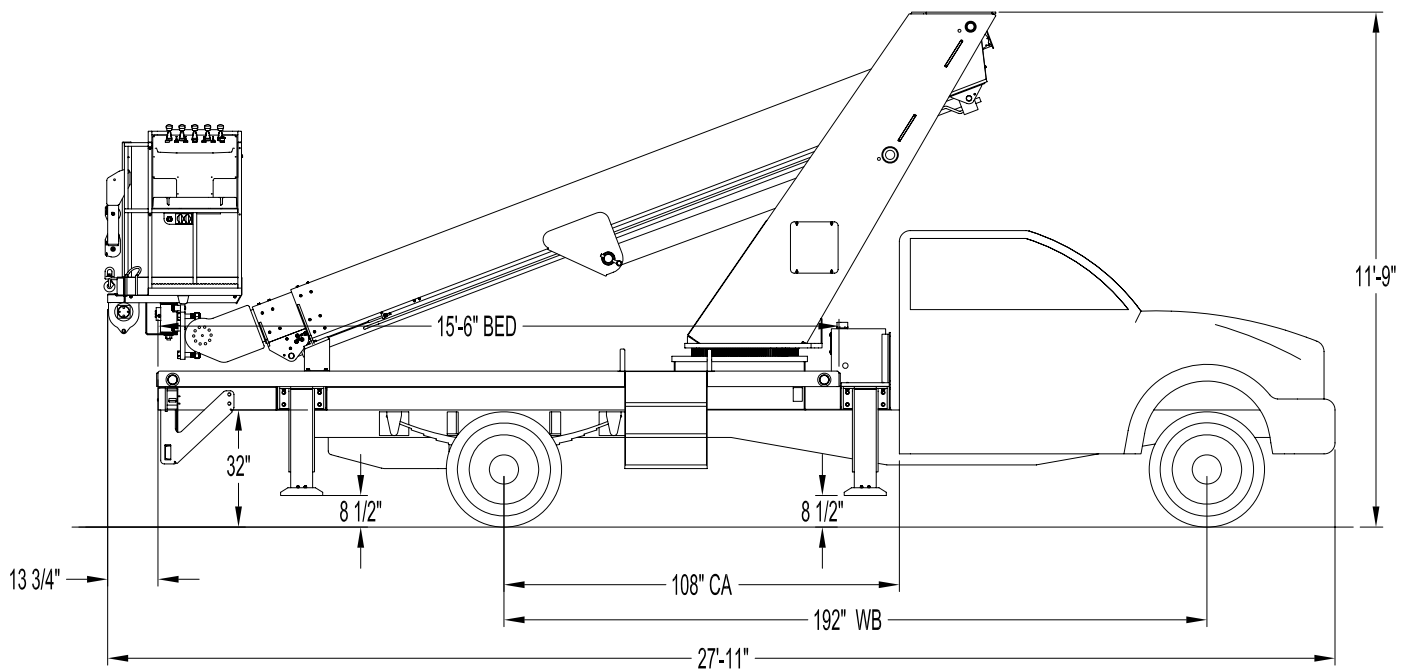




V60F SIDE VIEW DIAGRAM



- | | | | |
|----------------------------------------|--------------------|-----------------------------------------|--------------------|
| • Working Height | 63'/19,2 m | • Powered Boom Sections | 3 |
| • Working Side Reach | 38'/11,6 m | • Overall Height | 11'9\"/> |
| • Platform Capacity | 500 lbs/227 kg | • Unit Weight (Bare) | 7,760 lbs/3520 kg |
| • Platform Size | 30x40 in/76x102 cm | • Outrigger Spread Main | 8'2,4m |
| • Platform Type | Top-Mount | • Outrigger Spread Auxiliary | 8'2,4m |
| • Lifting Capacity (Main Winch) | N/A | • Front Gross Axle Weight Rating | 7,000 lbs/3175 kg |
| • Jib Winch | 500 lbs/227 kg | • Rear Gross Axle Weight Rating | 13,500 lbs/6123 kg |

TECHNICAL SPECIFICATIONS

Maximum Platform Height: 58' ground to platform floor.

Working Range: 63' max. height and 38' max. side reach.

Work Platform: 30"x40" Top-Mount work platform with 42" high rails. Equipped with two safety lanyard attachment loops and one safety harness and 72" lanyard. Platform capacity 500 lbs.

Platform Leveling System: Controller output module sends PWM signal to platform level in/out valve to keep platform within 0.2 degrees of level. Platform maintains a level position relative to the chassis frame in all operating positions. Leveling switch can be used to manually set the platform to any position desired while working.

Platform Controls: Three proportional electric control handles mounted in platform provide boom extension, lift and rotation. Selector switches provide platform rotation, enabling, manual leveling, engine speed, engine start/stop, emergency stop and optional jib winch. Control handles incorporate safety collars.

Lower Controls: Selector switches provide same functions as upper controls, with LCD screen to display function parameter adjustments, sensor readings, active function, input/output, and CANBUS device status. Controls mounted to roadside of turret and include upper control overrides.

Outrigger Controls: Parallel open-center stack valve for lever-operated control of right and left outriggers. The outrigger valves are mounted at the rear, under each corner of the bed with roadside valve controlling roadside outriggers and curbside valve controlling curbside outriggers.

Outriggers: "A" type modular design front and rear outriggers with 8' spread.

Frame: One piece, all welded, box-

type fabrication with integral outrigger mounts.

Turret: Reverse offset turret is one-piece weldment mounted on turntable. Turret rotates on large diameter ball bearing.

Rotation: Continuous turret rotation with no stops. Hydraulic motor drives turret through self-locking gear box.

Boom: Steel rectangular tube sections. Assembly includes heavy-duty cylinder fittings, pivot pins, and replaceable wear pads. Steel cable carrier mounted internal to boom.

Boom Extension: One double acting 2.5" cylinder extends the boom sections.

Lift: One double-acting full displacement, long stroke cylinder, provides smooth and stable boom elevation. Holding valve prevents boom from falling in event of hose failure.

Cylinders: All cylinders use microhoned cylinder tubing, chrome shafts, top grade packing and protective rod wipers. Cylinder-mounted holding valves provided on all load-holding cylinders.

Hoses: All high pressure hoses are wire braid reinforced with a minimum safety factor of 4 to 1.

Oil Tank Capacity: 20 gallon mounted to the top of the subframe.

Hydraulic System: Operating pressure is 3,000 PSI. System is parallel open center type and is equipped with liquid-filled pressure gauge.

Pump: Gear or clutch type, direct mount to truck PTO.

PTO: Heavy-duty, high-speed. Engaged from cab.

Cab Equipment: PTO switch with indicator lights installed in truck cab. Engine speed control and start/stop installed with control switches in platform remote control box and also located at lower controls. U/L approved

5:BC dry chemical fire extinguisher installed in truck cab.

Operators Manual & Video: Two CDs and one printed copy of operation, maintenance, safety and parts manual provided with each unit. Operational and safety video provided at delivery.

Installation: Unit installed on truck, painted, system and tank filled with oil, tested, inspected, and ready to operate.

Standard Paint: Paint boom and turret white, outriggers, bed, and boxes black.

Bumper: Bureau of Motor Carrier Safety rear bumper.

Weight: Approximately 7,760 lbs. with 15'6" steel-floor bed less truck.

Truck Chassis Required: Approx. 108" C.A., 7,000 lb. front axle and 19,500 lb. GVWR required. Trucks must have heavy-duty front and rear springs, 12V electrical system with high capacity alternator, cab clearance stop/tail/backup lights, and I.D. lamps. Recommended GVWR is minimum for HI-REACH with flatbed only. Contact factory when additional equipment is to be added.

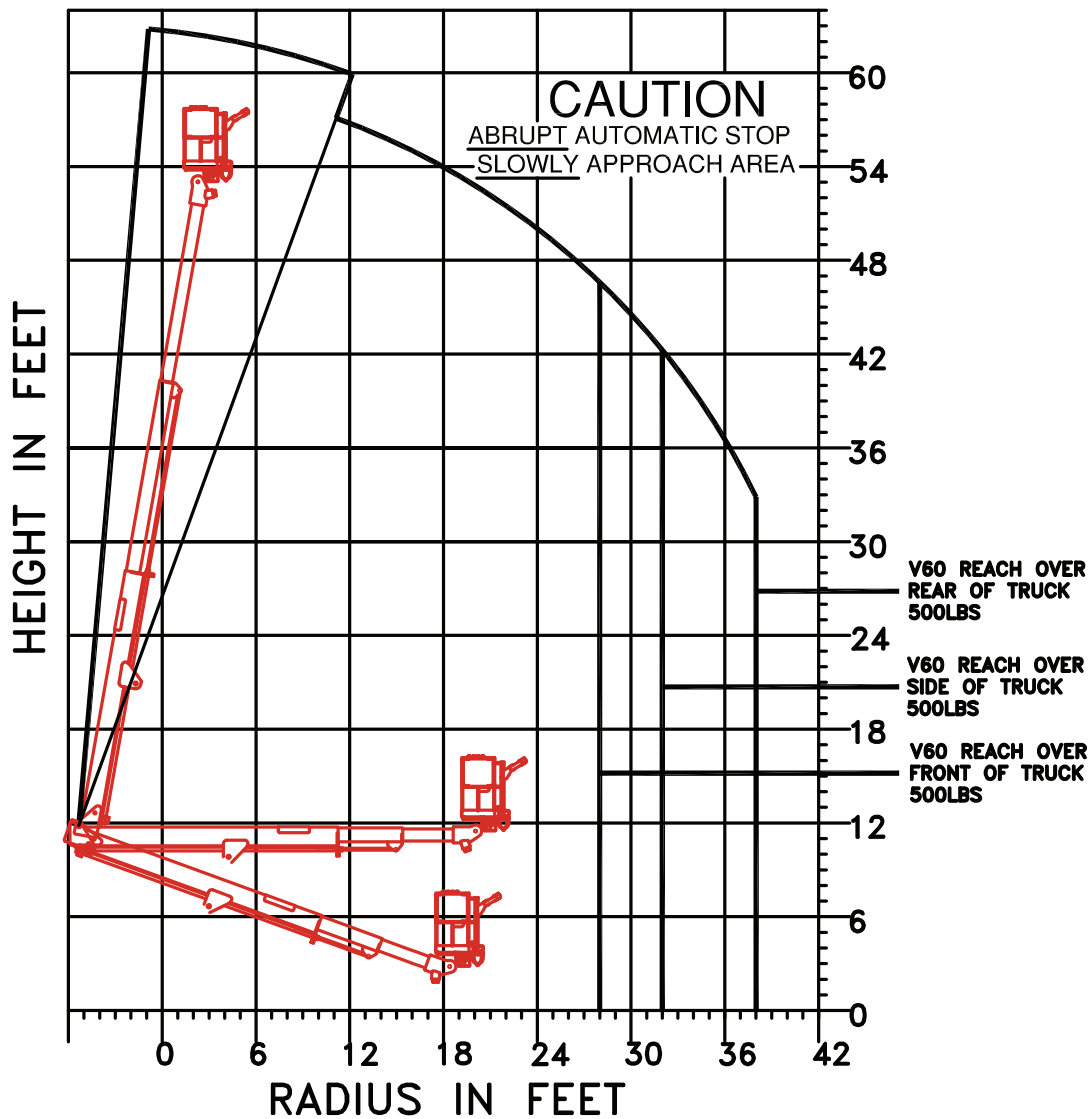
Options:

- 500 lb Capacity Platform Jib Attachment.
- Air Line and 110V Lines to Platform.
- Custom Toolboxes or Linebody.
- Wood or Steel Bed.
- Non-Slip Steel Ladder to Bed.
- Non-CDL Chassis Configuration.
- Much More....

Elliott Equipment Company reserves the right to change the specification of any unit at any time without prior notice. This brochure is only a statement of general specifications on the date of this publication. For more detailed info on specific Elliott trucks go to www.elliottequip.com

MAXIMUM PLATFORM CAPACITY

**TOTAL PLATFORM CAPACITY 500LBS
JIB LOAD PLUS PERSONNEL**



**USE OUTRIGGERS
AT ALL TIMES**

**AVOID JERKING
LOADS**

CHASSIS DATA

	V60F
Wheelbase (WB)	192" / 488 cm
Cab to Axle (CA)	108" / 274 cm
Cab to End of Frame (EOF)	100" / 254 cm
Frame Section Modulus	16.6 in3 / 120,000 psi / 827,371 kPa
Front Axle Gross Weight Rating	7,000 lb / 3175 kg
Rear Axle Gross Weight Rating	13,500 lb / 6123 kg

Chassis data is minimum general requirements-not for engineering.
Actual dimensions and truck data will depend on truck selection and axle configuration.

OPTIONS



110 Volt Line to Platform

Power your tools from within the platform with a 110 volt electrical outlet below the control box.



Material Handling Jib

Equip your HiReach platform with a removable material handling jib crane to lift up to 500 pounds with Elliott's electric winch system.



Non-CDL Chassis Options

Take advantage of the low chassis GVWR requirements by mounting this unit on a smaller truck that doesn't require a CDL license to operate.



15'6" Low Profile Wood Bed

Take advantage of the low weight of a wooden bed to increase payload capacity and reduce overall weight.



Bed Accessories

Mount a wide variety of tool accessories including welders and generators on the bed.



Ergonomic Steel Steps to Bed

Elliott's non-slip steel steps are cut into the bed frame providing easy access to the turret controls and bed.



Custom Bumper Cutout

Let us cut your business name into the steel ICC bumper for a clean and attractive signature on the job site.



Customized Service/Line Body

Let us work with you to customize a line body to secure your tools and supplies the the best way for your application.