



SJ1044 TH TELEHANDLER

KEY FEATURES

- 10,000 lbs (4,535 kg) Maximum lift capacity
- 44'3" (13.49 m) Maximum lift height
- 7,000 lbs (3,175 kg) Capacity @ maximum lift height (no outriggers)
- 8,000 lbs (3,629 kg) Capacity @ maximum lift height (on optional outriggers)
- 29'6" (9.0 m) Maximum forward reach
- 1,800 lbs (816 kg) Capacity @ maximum forward reach (no outriggers)
- 4,700 lbs (2,132 kg) Capacity @ maximum forward reach (on optional outriggers)
- DPF & DEF Free Tier 4 final 74hp/287lb-ft Deutz TCD 3.6L engine
- 20,000 lbs Drawbar pull
- 3 Speed Dana powershift transmission & Dana axles
- Yoke mounted lifting hook
- Rear towing hitch pin

OPTIONAL POWERPLANT

- Tier 4 Final 107hp / 320 lb/ft Deutz TCD 3.6L (includes DEF/SCR system)

STANDARD FEATURES

- Auxiliary hydraulics
- Engine block heater
- Quick attach carriage mount
- Rear window with wiper
- Sliding side window
- Suspension seat
- Single multifunction pilot operated joystick control
- In cab engine multifunction display
- Hydraulic test ports
- Lockable in cab storage box
- Fiberglass engine cowling
- Steel component and access covers
- 2 Year Gold Leaf Warranty (5 year structural warranty)

TIRE OPTIONS

- Foam filled 14 x 24 16PR grip Lug
- Pneumatic 13 x 24 16PR hard Surface
- Foam filled 13 x 24 16PR hard Surface
- Airless solid rubber 13 x 24

SJ1044 TH TELEHANDLER

10,000 lbs (4,535 kg) capacity 44' 3" (13.49 m) maximum lift height

SPECIFICATIONS

SJ1044 TH

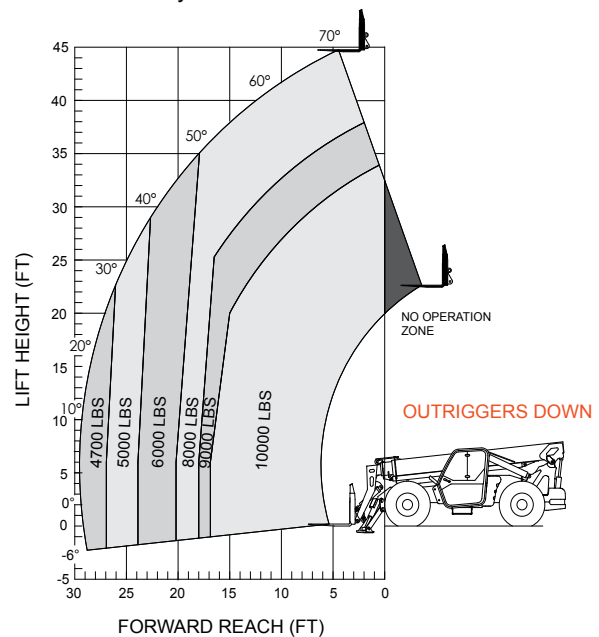
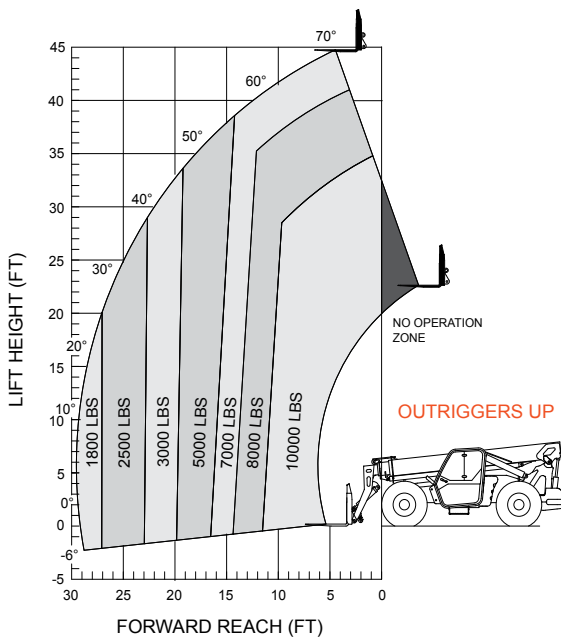
Maximum Lift Capacity	10,000 lbs (4,535 kg)
Maximum Lift Height	44' 3" (13.49 m)
Rated Lift Capacity @ Maximum Height	7,000 lbs (3,175 kg)
Rated Lift Capacity @ Max Height w. O/R	8,000 lbs (3,629 kg)
Maximum Forward Reach	29' 6" (8.03 m)
Rated Lift Capacity @ Maximum Reach	1,800 lbs (816 kg)
Rated Lift Capacity @ Max Reach w. O/R	4,700 lbs (2,132 kg)
O/A Length - Less Forks	21' 2" (6.45 m)
Overall Height - Stowed	8' 1" (2.47 m)
Overall Width	8' 5" (2.56 m)
Ground Clearance	19" (48.3 cm)
Turning Radius - Outside	147" (3.73 m)
Operating Weight	27,645 lbs (12,540 kg)
Engine	74hp / 287 lb/ft Deutz TCD 3.6L T4F
Max Travel Speed - Forward	15 mph (24 km/h)
Drawbar Pull	20,000 lbs
Transmission	Dana Powershift, 3 Speeds F/R
Axles	Dana
Steering	3 mode (Front Wheel, 4 Wheel, Crab)
Tires	Pneumatic 14 x 24 16PR Grip Lug

OPTIONAL EQUIPMENT

- Axle mount outriggers
- Closed cab (adds front and top window with wipers, full door, heater/defroster, operator fan)
- Air conditioning (closed cab only)
- Service convenience package (remote axle grease points & clean drain engine oil pan valve)
- Cold weather package (cold start engine oil, 60/40 antifreeze mix, battery blanket & hyd. tank heater)
- Four wheel fenders
- Road light package (2 front headlights, front & rear turn signals, tail lights, brake lights)
- Work light package (2 front facing & 2 rear facing halogen work lights)
- Boom light package (2 boom mounted LED work lights)
- Rotating beacon
- Positive air shut off valve
- Reserve brake system
- Pintle hitch (in lieu of standard hitch pin)
- Non destructive testing

ATTACHMENTS

- 48", 60" or 72" Quick attach floating pin carriage
- 48", 60" or 72" Side tilting carriage
- 72" Swing carriage
- 2' High capacity jib boom
- 12' or 15' Truss boom
- 1.75 Cubic yard bucket



Skyjack Head Office

55 Campbell Rd. Guelph, ON Canada N1H 1B9
 Sales Inquiries: 1-877-755-4387 (1-877-SJLIFTS)
 Main Switchboard: 1-800-265-2738
 Phone: 519-837-0888
 Fax: 519-837-8104
 Email: skyjack@skyjack.com
 www.skyjack.com

IMPORTANT

- Machine design complies with ANSI/ITSDF B56.6-2011 stability requirements for rough terrain forklifts.
- Rated capacities shown are with machine on firm level ground, steered straight with frame level and on properly inflated tires.
- Read boom angle and boom extension, then determine allowable load from chart.
- Do not exceed rated loads as dangerous and unstable machine conditions will result.
- Always travel with boom retracted in the lowest possible position.

