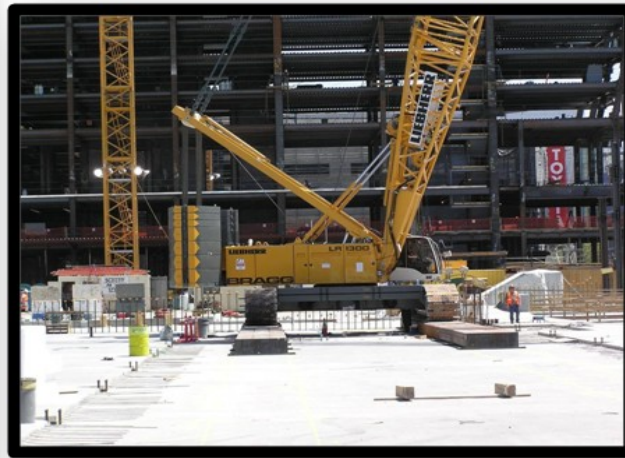




2009 Liebherr LR1300

Ask about our Lease-to-Buy program on approved credit!

(with a 10% down payment)



Tonnage	200	Price	Please call for price
Original Crane Hours	New	Luffer	371 of 2316 Luffer
Capacity	330 Ton	Condition	New
Boom	322ft Main		

Description: 2009 Liebherr LR 1300 Crawler Crane

1 basic LR 1300 supper structure and car-body equipped with a 600 HP Liebherr tier III, model D 9408 TI-E turbo charged and inter-cooled diesel engine, 2 main winches with 47,400 lbs bare drum line pull. 33,100 lbs. (7th layer) single line pull, 2 each 2182' foot 28mm main hoist cables, 1 each winch synchronization system for main winches, 1 each self erection system with extended car-body jacks, 1 each self assembly cylinder, 1 each self assembly system for upper counterweights, 1 each remote control for self assembly system, 1 reeving winch, LITRONIC LMI/LML system for main boom and luffing jib, LITRONIC back up control system, 4 each Anti two block switches, 1 each central lubrication for rotation bearing,

MAIN BOOM 2821.xx TO 322' FEET WITH CARBON FIBER PENDANTS:

- o 1 each 33 ft boom foot with carbon fiber pendants.
- o 1 each 23 ft boom head with 3 + 10 sheaves with carbon fiber pendants.
- o 6 each 39 ft sections with carbon fiber pendants.
- o 1 each 20 ft section with carbon fiber pendants.
- o 1 each 10 ft section with carbon fiber pendants.
- o 1 each rope guide for boom combos exceeding 164'ft.
- o 1 each rooster sheave for main boom two part line.
- o 1 each set of mid point suspensions with cables and hardware.

LUFFING JIB 2316 TO 371' FEET WITH CARBON FIBER PENDANTS