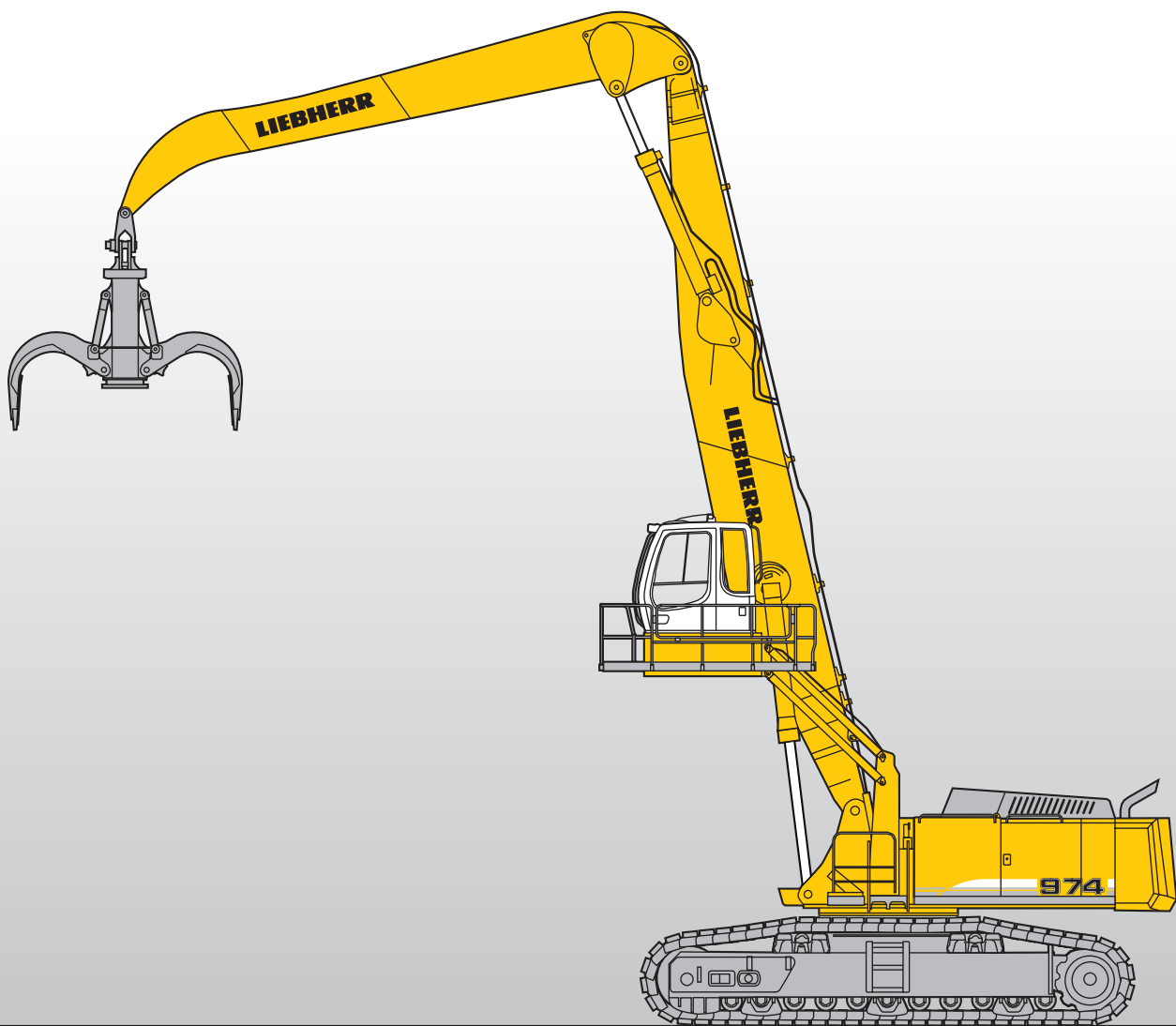


Machine for Industrial Applications R 974 C

Litronic®

Operating Weight: 242,288 – 265,657 lb

Engine Output: 543 hp / 400 kW



LIEBHERR

Technical Data



Engine

Rating per ISO 9249	543 hp (400 kW) at 1800 rpm
Model	Liebherr D 9508
Type	8 cylinder V-engine
Bore/Stroke	5.04/6.18 in
Displacement	986 in ³
Engine operation	4-stroke diesel Common-rail-injection turbo-charged after-cooled reduced emissions
Cooling	water-cooled
Air cleaner	dry-type air cleaner with pre-cleaner, primary and safety elements, automatic dust discharge
Fuel tank	386 gal
Electrical system	
Voltage	24 V
Batteries	2 x 170 Ah/12 V
Starter	24 V/7.8 kW
Alternator	three phase current 28 V/80 A



Hydraulic System

Hydraulic pumps for attachment and travel drive	2 Liebherr variable flow swash plate pumps
Max. flow	2 x 109 gpm
Max. hydr. pressure	5,076 psi
Pump control	electro-hydraulic with electronic engine speed sensing regulation over entire RPM range, pressure compensation, flow compensation automatic oil flow optimizer, flow summation
Hydraulic pump for swing drive	1 reversible swash plate pump, closed-loop circuit
Max. flow	69 gpm
Max. hydr. pressure	5,076 psi
Hydraulic tank	197 gal
Hydraulic system	357 gal
Hydraulic oil filter	2 full flow filters in return line with integrated fine filter area (5 µm), 1 high pressure filter for each main pump
Cooler	cooler unit, consisting of radiator for engine coolant with after-cooler core, sandwiched with cooler for hydraulic fluid and fuel with hydro-statically controlled fan drive
MODE selection	adjustment of machine performance and the hydraulics via a mode selector to match application
ECO	for economical operation
POWER	for maximum digging power and heavy duty jobs
LIFT	for lifting
FINE	for precision work and lifting with sensitive movements
RPM adjustment	step less adjustment of engine output via rpm at each selected mode
Menu for auxiliary functions	4 fixed adjustable oil flow parameters for optional working tools



Hydraulic Controls

Power distribution	via control valves in single block with integrated safety valves
Flow summation	to boom stick and bucket cylinders
Closed-loop circuit	for uppercarriage swing drive
Activation	electro-hydraulic control
Attachment and swing	proportional via joystick levers
Travel	proportional via foot pedals or removable hand levers
Additional functions	via joystick push buttons or foot pedals



Swing Drive

Drive by	Liebherr swash plate motor with integrated brake valves
Transmission	Liebherr compact planetary reduction gear
Swing ring	Liebherr, sealed single race ball bearing swing ring, internal teeth
Swing speed	0–5.9 rpm step less
Swing torque	217,581 lbf ft
Holding brake	wet multi-disc (spring applied, pressure released)
Option	pedal controlled positioning brake



Uppercarriage

Design	torque resistant modular design upper frame
Attachment mounting	parallel length girders
Catwalks	on both sides



Operator's Cab

Cab	resiliently mounted, sound insulated, tinted windows. Front window armored glass, door with sliding window
Operator's seat	shock absorbing suspension, adjustable to operator's weight, 6-way adjustable seat
Joysticks	integrated into adjustable seat consoles
Monitoring	menu driven query of current operating conditions via the LCD display. Automatic monitoring, display, warning (acoustical and optical signal) and saving machine malfunction data, for example, engine overheating, low engine oil pressure or low hydraulic oil level
Heating system	standard automatic air conditioning, combined cooler/heater, additional dust filter in fresh air/recirculated
Noise emission	
ISO 6396	L _{DA} (inside cab) = 72 dB(A)
2000/14/EC	L _{WA} (surround noise) = 109 dB(A)



Undercarriage

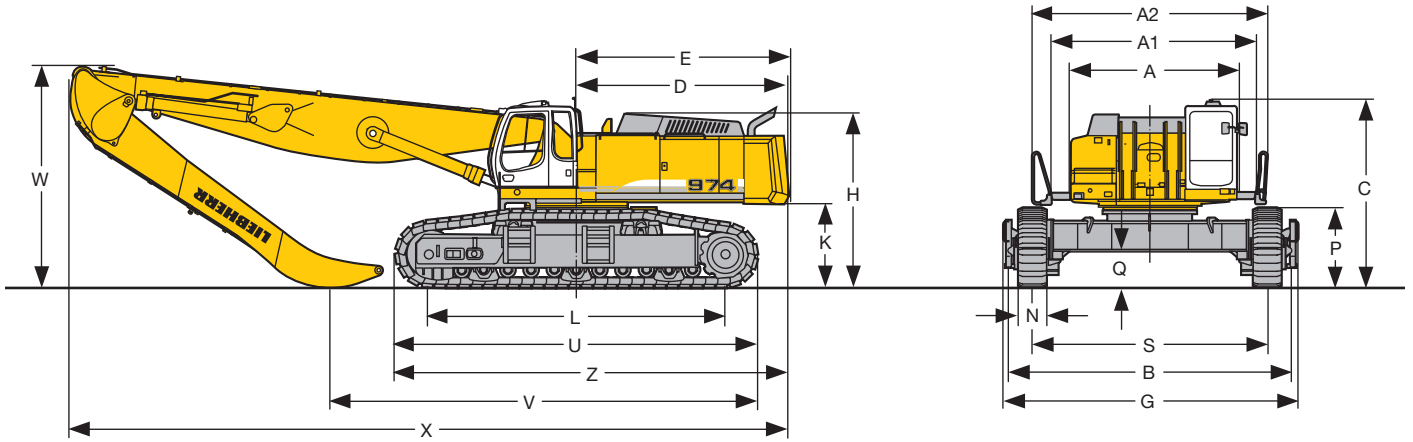
EW	heavy version, long undercarriage, extra wide
Drive	Liebherr swash plate motors with integrated brake valves on both sides
Transmission	Liebherr planetary reduction gears
Travel speed	low range –1.3 mph high range –2.2 mph
Drawbar pull max.	194,909 lbf
Track components	D 9 G, maintenance-free
Track rollers/Carrier rollers	11/2
Track pads	double-grouser beveled or flat pads
Digging locks	wet multi-discs (spring applied, pressure released)
Brake valves	integrated into travel motor



Attachment

Type	box-type, combination of resistant steel plates and cast steel components
Hydraulic cylinders	Liebherr cylinders with special seal-system, shock absorbed
Pivots	sealed, low maintenance
Pivots bucket-to-stick	
bucket-to-link	O-ring sealed and completely enclosed
Lubrication	automatic central lubrication system
Hydraulic connections	pipes and hoses equipped with SAE split-flange connections

Dimensions



	ft in		
A	11' 10"		
A1	14' 4"		
A2	16' 5"		
C	13' 1"		
D	14' 9"		
E	14' 11"		
H	12' 2"		
K	5' 10"		
L	20' 9"		
P	5' 6"		
Q	2' 7"		
S	16' 5"		
U	25' 4"		
N	24"	30"	3' 3"
B	19' 8"	19' 8"	19' 8"
G	20' 7"	20' 7"	20' 7"
Z	27' 6"		

Industrial-Type Straight Boom 32'10" and Industrial Stick 24'7"		ft in
V		29' 8"
W		15' 7"
X		50'

Industrial-Type Straight Boom 39'4" and Industrial Stick 29'6"		ft in
V		32' 10"
W		20' 6"
X		56' 1"

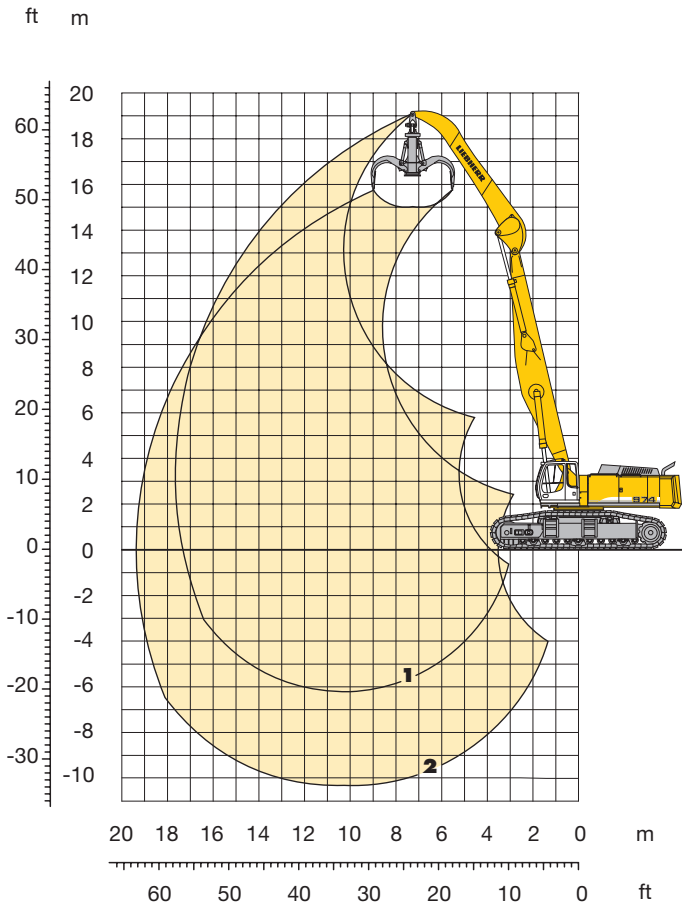
Industrial-Type Gooseneck Boom 39'4" and Industrial Stick 29'6"		ft in
V		30' 4"
W		15' 7"
X		56' 7"

Industrial-Type Straight Boom 45'11" and Industrial Stick 34'5"		ft in
V		35' 9"
W		25' 3"
X		61' 10"

Industrial-Type Gooseneck Boom 45'11" and Industrial Stick 34'5"		ft in
V		32' 10"
W		17' 11"
X		63'

Industrial Attachment

with Industrial-Type Straight Boom 32'10"



Attachment Envelope

- 1** with industrial stick 24'7"
- 2** with industrial stick 24'7" and grapple model 75 B

Operating Weight and Ground Pressure

The operating weight includes basic machine with industrial straight boom 32'10", industrial stick 24'7" and grapple model 75 B (open tines 3.92 yd³).

Undercarriage	EW			
Pad width	in	24"	30"	3'3"
Weight	lb	242,284	245,591	258,161
Ground pressure	psi	19.2	15.5	12.2

* flat pads

Lift Capacities

at End of Stick

Industrial Stick 24'7"

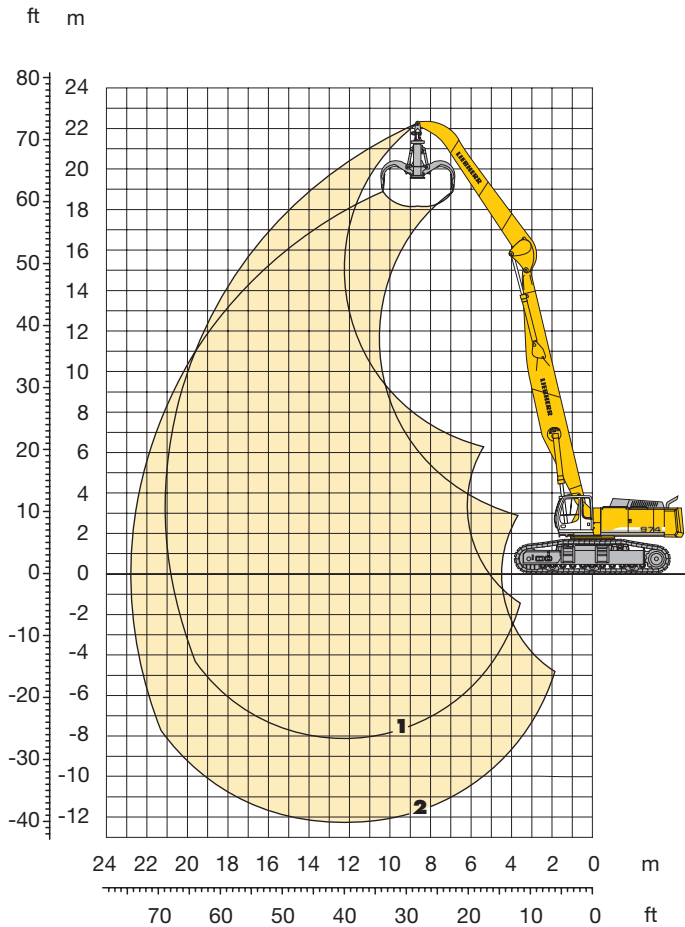
ft	Under-carriage	10 ft		15 ft		20 ft		25 ft		30 ft		35 ft		40 ft		45 ft		50 ft		55 ft		60 ft		65 ft		70 ft		75 ft		ft					
		EW	EW	EW	EW	EW	EW	EW	EW	EW	EW	EW	EW	EW	EW	EW	EW	EW	EW	EW	EW	EW	EW	EW	EW	EW	EW	EW	EW						
80	EW																																		
75	EW																																		
70	EW																																		
65	EW																																		
60	EW																												36,6'	36,6'	29.30				
55	EW										36,6'	36,6'																	31,1'	31,1'	36.72				
50	EW										40,3'	40,3'	35,5'	35,5'															28,1'	28,1'	42.22				
45	EW										39,2'	39,2'	37,9'	37,9'	32,1'	32,1'														26,2'	26,2'	46.49			
40	EW										39,1'	39,1'	37,5'	37,5'	36,3'	36,3'														25,0'	25,0'	49.88			
35	EW										40,0'	40,0'	38,0'	38,0'	36,3'	36,3'	34,5'	34,5'													24,2'	24,2'	52.56		
30	EW										41,6'	41,6'	39,0'	39,0'	36,9'	36,9'	35,2'	35,2'													23,7'	23,7'	54.63		
25	EW										48,2'	48,2'	43,9'	43,9'	40,5'	40,5'	37,8'	37,8'	35,4'	35,7'	29,8'	29,8'									23,5'	23,5'	56.16		
20	EW																															23,6'	23,6'	57.21	
15	EW																															23,8'	23,8'	57.79	
10	EW																															24,3'	24,3'	57.93	
5	EW																															25,0'	25,0'	57.61	
0	EW																															26,0'	26,0'	56.85	
- 5	EW																															27,3'	27,3'	55.61	
- 10	EW																															29,2'	29,2'	53.86	
- 15	EW																															32,7'	32,7'	49.15	
- 20	EW																															43,6'	43,6'	38.05	
- 25	EW																																		
- 30	EW																																		
- 35	EW																																		

 Height
  Can be slewed through 360°
  In longitudinal position of undercarriage
  Max. reach
 * Limited by hydr. capacity

The lift capacities are stated in lb x 1000 on the lifting gear's stick tip, and can be lifted 360° on firm, level supporting surface. Capacities are valid for 30" wide double grouser pads. Indicated loads are based on ISO 10567 standard and do not exceed 75 % of tipping or 87 % of hydraulic capacity (indicated via *). Lifting capacity of the excavator is limited by machine stability, hydraulic capacity and maximum permissible load of the load hook.

Industrial Attachment

with Industrial-Type Straight Boom 39'4"



Attachment Envelope

- 1** with industrial stick 29'6"
- 2** with industrial stick 29'6" and grapple model 75 B

Operating Weight and Ground Pressure

The operating weight includes basic machine with industrial straight boom 39'4", industrial stick 29'6" and grapple model 75 B (open tines 3.27 yd³).

Undercarriage	EW			
Pad width	in	24"	30"	3'3"*
Weight	lb	245,811	249,118	261,689
Ground pressure	psi	19.5	15.8	12.3

* flat pads

Lift Capacities

at End of Stick

Industrial Stick 29'6"

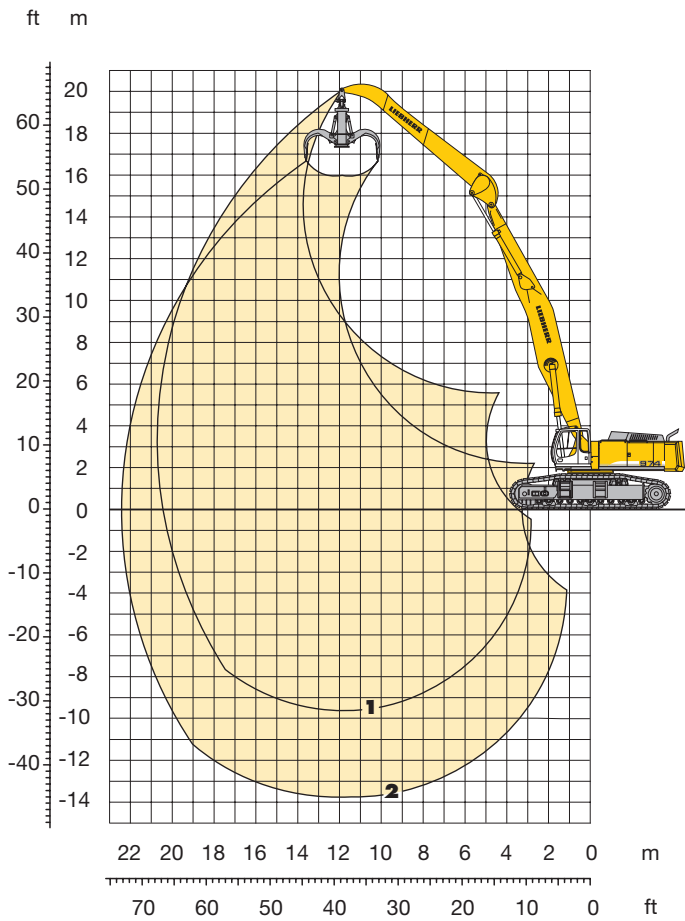
ft	Under-carriage	10 ft		15 ft		20 ft		25 ft		30 ft		35 ft		40 ft		45 ft		50 ft		55 ft		60 ft		65 ft		70 ft		75 ft		ft		
		EW	EW	EW	EW	EW	EW	EW	EW	EW	EW	EW	EW	EW	EW	EW	EW	EW	EW	EW	EW	EW	EW	EW	EW	EW	EW	EW	EW			
80	EW																															
75	EW																															
70	EW																															
65	EW													30,6*	30,6*														30,0*	30,0*	34,45	
60	EW													32,4*	32,4*	30,1*	30,1*												25,9*	25,9*	42,17	
55	EW													31,4*	31,4*	30,1*	30,1*	28,6*	28,6*										23,4*	23,4*	48,10	
50	EW															29,6*	29,6*	28,5*	28,5*	25,7*	25,7*								21,9*	21,9*	52,87	
45	EW															31,1*	31,1*	29,6*	29,6*	28,3*	28,3*	27,2*	27,2*						20,8*	20,8*	56,77	
40	EW															31,7*	31,7*	29,9*	29,9*	28,4*	28,4*	27,2*	27,2*	26,2	26,2*				19,4*	19,4*	62,63	
35	EW															32,7*	32,7*	30,6*	30,6*	28,8*	28,8*	27,4*	27,4*	26,1	26,2*				19,1*	19,1*	64,77	
30	EW															37,1*	37,1*	34,0*	34,0*	31,5*	31,5*	29,5*	29,5*	27,8*	27,8*	22,2	24,2*		18,9*	18,9*	66,45	
25	EW																													18,8	18,8	67,71
20	EW																													18,9	18,9	68,58
15	EW																													19,1	19,1	69,06
10	EW																													19,2	19,4	69,17
5	EW																													19,2	19,9*	68,91
0	EW																													19,5	20,5*	68,28
- 5	EW																													19,9	21,3*	67,26
- 10	EW																													20,6	21,8*	65,83
- 15	EW																													21,3	21,3*	63,72
- 20	EW																													23,3	23,3*	58,89
- 25	EW																													28,2	28,2*	49,94
- 30	EW																															
- 35	EW																															

 Height
  Can be slewed through 360°
  In longitudinal position of undercarriage
  Max. reach
 * Limited by hydr. capacity

The lift capacities are stated in lb x 1000 on the lifting gear's stick tip, and can be lifted 360° on firm, level supporting surface. Capacities are valid for 30" wide double grouser pads. Indicated loads are based on ISO 10567 standard and do not exceed 75% of tipping or 87% of hydraulic capacity (indicated via *). Lifting capacity of the excavator is limited by machine stability, hydraulic capacity and maximum permissible load of the load hook.

Industrial Attachment

with Industrial-Type Gooseneck Boom 39'4"



Attachment Envelope

- 1 with industrial stick 29'6"
- 2 with industrial stick 29'6" and grapple model 75 B

Operating Weight and Ground Pressure

The operating weight includes basic machine with industrial gooseneck boom 39'4", industrial stick 29'6" and grapple model 75 B (open tines 3.27 yd³).

Undercarriage	EW			
Pad width	in	24"	30"	3'3"*
Weight	lb	246,473	249,780	262,350
Ground pressure	psi	19.5	15.8	12.3

* flat pads

Lift Capacities

at End of Stick

Industrial Stick 29'6"

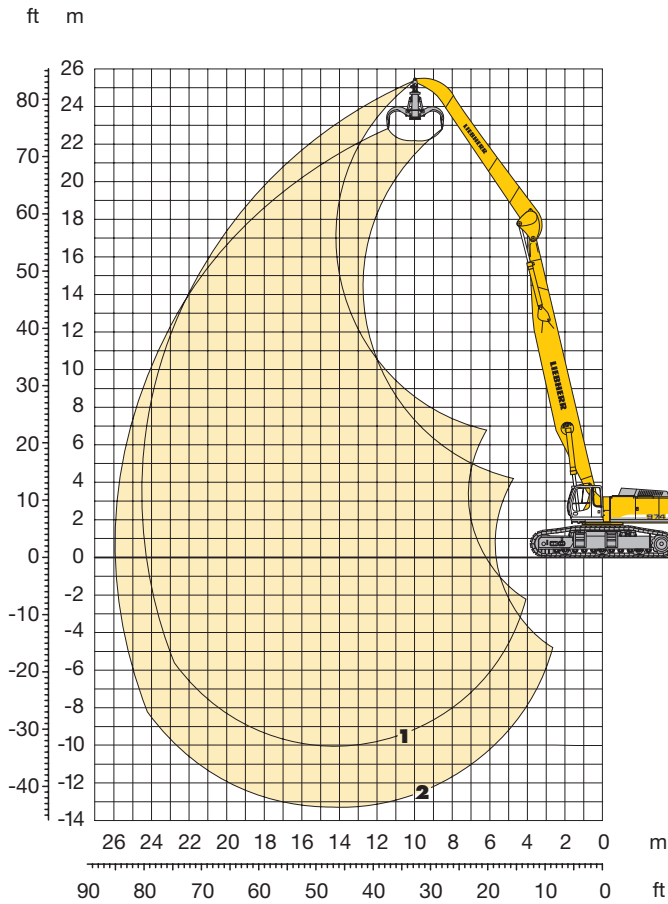
ft	Under-carriage	10 ft		15 ft		20 ft		25 ft		30 ft		35 ft		40 ft		45 ft		50 ft		55 ft		60 ft		65 ft		70 ft		75 ft		ft													
		EW	EW	EW	EW	EW	EW	EW	EW	EW	EW	EW	EW	EW	EW	EW	EW	EW	EW	EW	EW	EW	EW	EW	EW	EW	EW	EW	EW														
80	EW																																										
75	EW																																										
70	EW																																										
65	EW														24,8*	24,8*													24,5*	24,5*	40.15												
60	EW															25,1*	25,1*												22,4*	22,4*	46.35												
55	EW															26,3*	26,3*	23,8*	23,8*										21,0*	21,0*	51.28												
50	EW															25,8*	25,8*	25,3*	25,3*	20,9*	20,9*								20,1*	20,1*	55.30												
45	EW															25,7*	25,7*	25,0*	25,0*	24,6*	24,6*								19,5*	19,5*	58.61												
40	EW															26,1*	26,1*	25,2*	25,2*	24,5*	24,5*	22,6	22,6*						19,1*	19,1*	61.31												
35	EW															26,9*	26,9*	25,7*	25,7*	24,8*	24,8*	24,1	24,1*						18,9*	18,9*	63.49												
30	EW															29,7*	29,7*	27,9*	27,9*	26,5*	26,5*	25,3*	25,3*	24,4	24,4*	19,5*	19,5*		18,8*	18,8*	65.21												
25	EW															34,4*	34,4*	31,5*	31,5*	29,2*	29,2*	27,4*	27,4*	25,9*	25,9*	24,8	24,8*	22,3	23,7*		18,9*	18,9*	66.49										
20	EW															42,5*	42,5*	37,3*	37,3*	33,6*	33,6*	30,7*	30,7*	28,5*	28,5*	26,7	26,7*	25,3	25,3*	22,0	24,2*		19,1	19,1*	67.38								
15	EW															73,2*	73,2*	56,8*	56,8*	46,9*	46,9*	40,4*	40,4*	35,8*	35,8*	32,4*	32,4*	29,7*	29,7*	27,6	27,6*	24,8	25,9*	21,7	24,5*		19,5	19,5*	67.87				
10	EW															34,3*	34,3*	63,2*	63,2*	51,3*	51,3*	43,4*	43,4*	38,0*	38,0*	34,0*	34,0*	30,9	30,9*	27,8	28,5*	24,3	26,5*	21,3	24,8*		19,8	20,0*	67.98				
5	EW															23,3*	23,3*	57,4*	57,4*	55,0*	55,0*	46,1*	46,1*	40,0*	40,0*	35,4	35,4*	31,3	32,0*	27,1	29,2*	23,8	27,0*	21,0	25,1		19,7	20,6*	67.72				
0	EW															10,0*	10,0*	15,1*	15,1*	22,2*	22,2*	43,8*	43,8*	57,7	57,7*	48,3	48,3*	41,6	41,6*	35,3	36,7*	30,4	32,9*	26,5	29,9*	23,3	27,4	20,8	25,2		19,8	21,5*	67.07
- 5	EW	10,0*	10,0*													19,4*	19,4*	27,3*	27,3*	41,1*	41,1*	59,3	59,3*	48,6	48,6*	40,5	42,8*	34,4	37,6*	29,7	33,6*	26,0	30,3*	23,0	27,6	20,6	25,0		20,2	22,6	66.03		
- 10	EW															23,6*	23,6*	30,9*	30,9*	43,3*	43,3*	58,8	58,8*	47,2	47,2*	50,5*	50,5*	33,4	38,1*	29,0	33,7*	25,6	30,0*	22,9	26,6*		21,7	24,6*	62.68				
- 15	EW															34,6*	34,6*	46,6*	46,6*	58,2	58,2*	47,1	47,1*	49,4*	49,4*	39,1	42,7*	33,4	37,3*	29,0	32,9*	25,7	29,0*	23,2	24,8*		23,1	24,5*	60.29				
- 20	EW															50,7*	50,7*	55,3	55,3*	47,3	47,3*	47,3	47,3*	39,4	39,4*	40,9*	40,9*	33,6	35,7*	29,3	31,1*	26,1	26,7*		24,2	24,2*	57.36						
- 25	EW															50,9*	50,9*	43,8	43,8*	37,8	37,8*	32,7	32,7*																		29,5	29,5*	48.33
- 30	EW																																										
- 35	EW																																										

 Height
  Can be slewed through 360°
  In longitudinal position of undercarriage
  Max. reach
 * Limited by hydr. capacity

The lift capacities are stated in lb x 1000 on the lifting gear's stick tip, and can be lifted 360° on firm, level supporting surface. Capacities are valid for 30" wide double grouser pads. Indicated loads are based on ISO 10567 standard and do not exceed 75 % of tipping or 87 % of hydraulic capacity (indicated via *). Lifting capacity of the excavator is limited by machine stability, hydraulic capacity and maximum permissible load of the load hook.

Industrial Attachment

with Industrial-Type Straight Boom 45'11"



Attachment Envelope

- 1 with industrial stick 34'5"
- 2 with industrial stick 34'5" and grapple model 75 B

Operating Weight and Ground Pressure

The operating weight includes basic machine with industrial straight boom 45'11", industrial stick 34'5" and grapple model 75 B (open tines 2.62 yd³).

Undercarriage	EW			
Pad width	in	24"	30"	3'3"*
Weight	lb	249,118	252,425	264,996
Ground pressure	psi	19.6	15.9	12.5

* flat pads

Lift Capacities

at End of Stick

Industrial Stick 34'5"

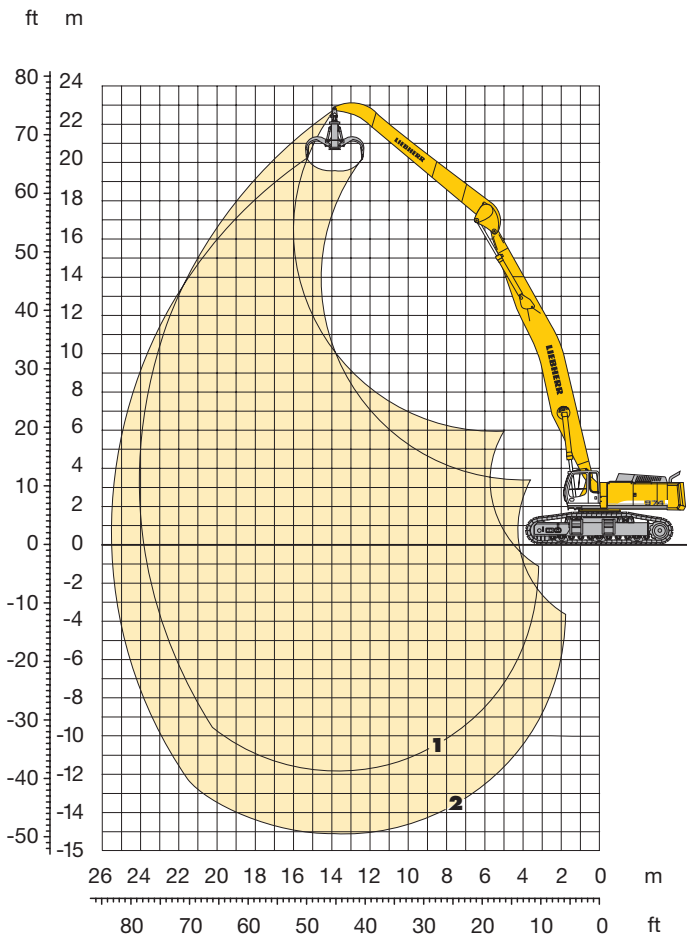
ft	Under-carriage	15 ft		20 ft		25 ft		30 ft		35 ft		40 ft		45 ft		50 ft		55 ft		60 ft		65 ft		70 ft		75 ft		80 ft		ft				
		EW	EW	EW	EW	EW	EW	EW	EW	EW	EW	EW	EW	EW	EW	EW	EW	EW	EW	EW	EW	EW	EW	EW	EW	EW	EW	EW	EW	EW				
80	EW																												25,2'	25,2'	39,61			
75	EW														25,9'	25,9'														22,0'	22,0'	47,55		
70	EW														26,5'	26,5'	25,1'	25,1'												20,0'	20,0'	53,83		
65	EW																24,3'	24,3'	23,2'	23,2'										18,6'	18,6'	58,99		
60	EW																23,9'	23,9'	22,7'	22,7'										17,6'	17,6'	63,32		
55	EW																23,7'	23,7'	22,5'	22,5'	21,4'	21,4'								16,9'	16,9'	66,99		
50	EW																23,8'	23,8'	22,4'	22,4'	21,3'	21,3'	20,4'	20,4'			16,6'	16,6'		16,4'	70,09			
45	EW																24,0'	24,0'	22,6'	22,6'	21,4'	21,4'	20,3'	20,3'	19,3'	19,5'				16,0'	16,0'	72,71		
40	EW																26,2'	26,2'	24,4'	24,4'	22,9'	22,9'	21,5'	21,5'	20,4'	20,4'	19,3'	19,4'			15,7'	15,7'	74,89	
35	EW																29,4'	29,4'	27,0'	27,0'	24,9'	24,9'	23,2'	23,2'	21,8'	21,8'	20,6'	20,6'	19,1'	19,5'	16,4'	18,6'		
30	EW																30,7'	30,7'	27,9'	27,9'	25,6'	25,6'	23,7'	23,7'	22,2'	22,2'	20,8'	20,8'	18,8'	19,6'	16,3'	18,6'		
25	EW																																	
20	EW																																	
15	EW																																	
10	EW																																	
5	EW																																	
0	EW																																	
-5	EW																																	
-10	EW																																	
-15	EW																																	
-20	EW																																	
-25	EW																																	
-30	EW																																	
-35	EW																																	

Height Can be slewed through 360° In longitudinal position of undercarriage Max. reach * Limited by hydr. capacity

The lift capacities are stated in lb x 1000 on the lifting gear's stick tip, and can be lifted 360° on firm, level supporting surface. Capacities are valid for 30" wide double grouser pads. Indicated loads are based on ISO 10567 standard and do not exceed 75% of tipping or 87% of hydraulic capacity (indicated via *). Lifting capacity of the excavator is limited by machine stability, hydraulic capacity and maximum permissible load of the load hook.

Industrial Attachment

with Industrial-Type Gooseneck Boom 45'11"



Attachment Envelope

- 1** with industrial stick 34'5"
- 2** with industrial stick 34'5" and grapple model 75 B

Operating Weight and Ground Pressure

The operating weight includes basic machine with industrial gooseneck boom 45'11", industrial stick 34'5" and grapple model 75 B (open tines 2.62 yd³).

Undercarriage	EW			
Pad width	in	24"	30"	3'3"*
Weight	lb	249,780	253,086	265,657
Ground pressure	psi	19.8	16.1	12.6

* flat pads

Lift Capacities

at End of Stick

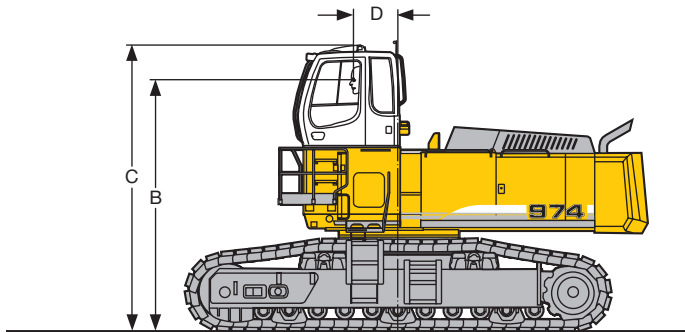
Industrial Stick 34'5"

ft	Under-carriage	10 ft		15 ft		20 ft		25 ft		30 ft		35 ft		40 ft		45 ft		50 ft		55 ft		60 ft		65 ft		70 ft		75 ft		ft		
		EW	EW	EW	EW	EW	EW	EW	EW	EW	EW	EW	EW	EW	EW	EW	EW	EW	EW	EW	EW	EW	EW	EW	EW	EW	EW	EW	EW	EW		
80	EW																															
75	EW																															
70	EW																	21,4*	21,4*													
65	EW																		20,3*	20,3*										19,0*	19,0*	51,70
60	EW																		19,7*	19,7*										17,8*	17,8*	57,07
55	EW																		19,4*	19,4*										17,0*	17,0*	61,54
50	EW																		19,4*	19,4*										16,4*	16,4*	65,30
45	EW																		19,6*	19,6*										16,0*	16,0*	68,49
40	EW																		19,6*	19,6*										15,7*	15,7*	71,16
35	EW																		21,0*	21,0*										17,7*	17,7*	73,40
30	EW																		21,6*	21,6*										16,0	16,0*	75,22
25	EW																		20,4*	20,4*										16,0	16,0*	76,67
20	EW																		20,9*	20,9*										16,5	16,5*	77,76
15	EW																		20,9*	20,9*										16,2	16,2*	78,51
10	EW																		20,8*	20,8*										16,2	16,2*	78,93
5	EW																		20,8*	20,8*										16,5	16,5*	79,03
0	EW																		20,3*	20,3*										16,2	16,2*	78,80
-5	EW																		21,4*	21,4*										16,9	16,9*	78,25
-10	EW																		21,4*	21,4*										16,5	16,5*	77,36
-15	EW																		22,1*	22,1*										16,2	16,2*	74,53
-20	EW																		22,2*	22,2*										15,8	15,8*	72,55
-25	EW																		23,2*	23,2*										15,9	15,9*	70,14
-30	EW																		23,2*	23,2*										16,2	16,2*	67,27
-35	EW																		22,5	22,5										19,0	19,0*	60,82

 Height
  Can be slewed through 360°
  In longitudinal position of undercarriage
  Max. reach
 * Limited by hydr. capacity

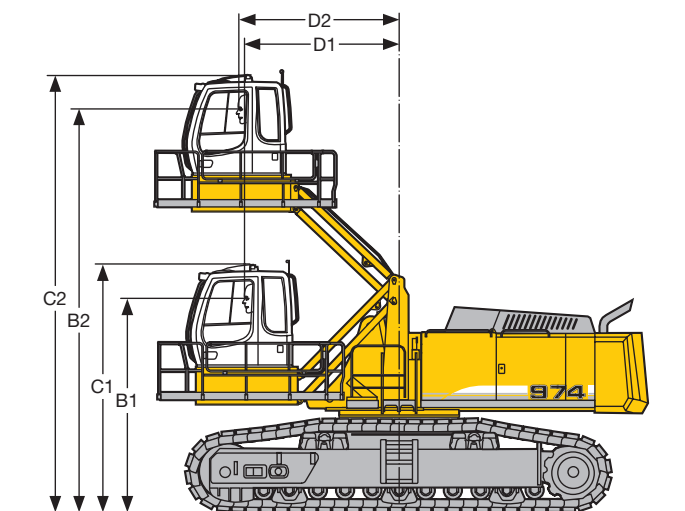
The lift capacities are stated in lb x 1000 on the lifting gear's stick tip, and can be lifted 360° on firm, level supporting surface. Capacities are valid for 30" wide double grouser pads. Indicated loads are based on ISO 10567 standard and do not exceed 75% of tipping or 87% of hydraulic capacity (indicated via *). Lifting capacity of the excavator is limited by machine stability, hydraulic capacity and maximum permissible load of the load hook.

Choice of Cab Elevations and Cab Protections



Fixed Cab Elevation

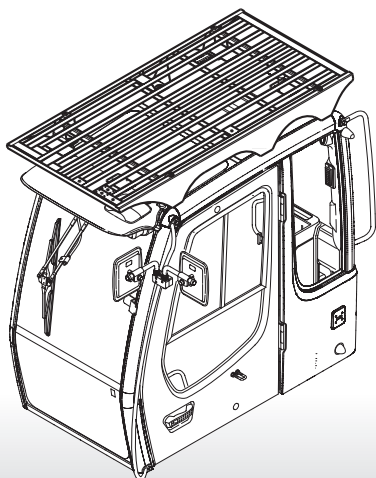
Height	2'7"	3'11"	6'7"
B	13'8"	15'	17'7"
C	15'9"	17'	19'8"
D	2'8"	2' 8"	2'8"



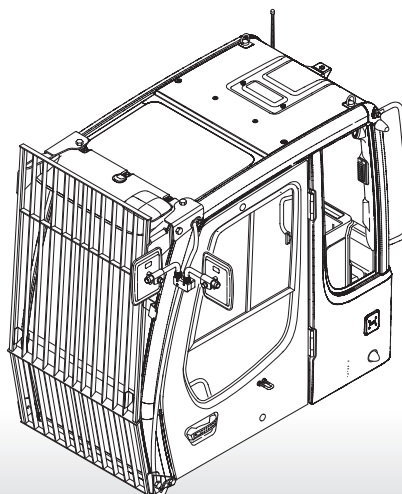
Hydraulic Cab Elevation Parallelogram

B1	12'6"
B2	24'2"
C1	14'7"
C2	26'3"
D1	9'2"
D2	9'8"

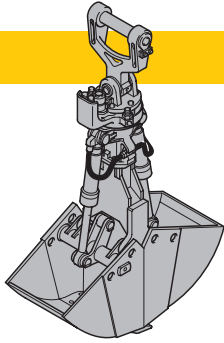
Upper Cab Guard



Front Cab Guard

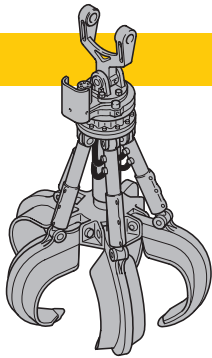


Variety of Tools



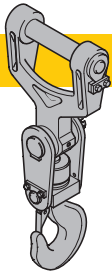
Shells for Loose Material **Clamshell Model 25 B (with suspension)**

Cutting width	ft in	4'11"	5'7"	5'7"	6'7"
Capacity	yd ³	2.62	3.01	3.66	3.92
Weight	lb	7,496	8,047	7,606	8,267



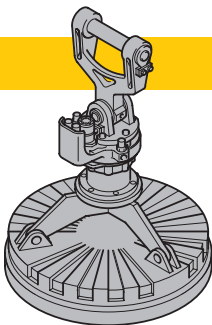
Multiple Tine Grapples

		open tines			semi-closed tines			closed tines		
Grapple Model 75 B	Capacity yd ³	2.62	3.27	3.92	2.62	3.27	3.92	2.62	3.27	3.92
(with suspension)	Weight lb	8,377	8,598	8,818	9,590	9,921	10,251	10,362	10,692	11,023



Crane hook with suspension

Max. load	lb	70,547
Weight	lb	397

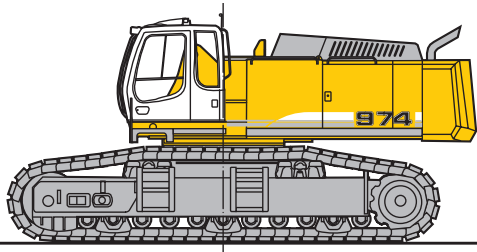


Electro-magnets with suspension

Generator up to 33 kW

For further information see color brochure "Add-on tools for material-handling technology". To operate a magnet the installation of a generator is required; please contact your Liebherr dealer or the factory for further information.

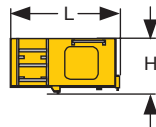
Component Dimensions and Weights



Basic Machine

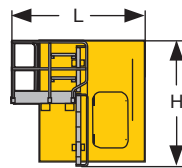
Track pads	in	24"	30"	3'3"
Weight with EW-Undercarriage	lb	193,342	196,649	209,219

* flat pads



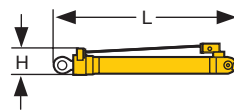
Cab Elevation

L Length	ft in	6'	
H Height	ft in	3'1"	
Width	ft in	4'6"	
Weight	lb	1,213	



Cab Elevation

L Length	ft in	7' 7"	7' 7"
H Height	ft in	4' 5"	7' 1"
Width	ft in	5'11"	5'11"
Weight	lb	1,874	2,866



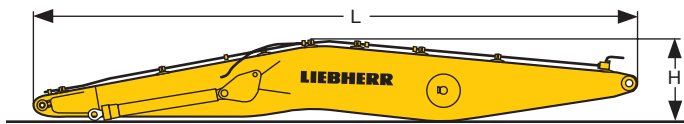
Hoist Cylinders (two)

L Length	ft in	10' 4"	
H Height	ft in	22"	
Width	ft in	16"	
Weight	lb	2 x 2,756	



Industrial-Type Straight Boom

Stick length	ft in	32'10"	39'4"	45'11"
L Length	ft in	33'11"	40'6"	47' 1"
H Height	ft in	6' 1"	5'9"	5' 7"
Width	ft in	5' 1"	5'1"	5' 1"
Weight	lb	25,132	27,778	30,423



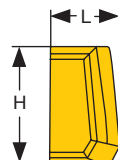
Industrial-Type Gooseneck Boom

Stick length	ft in	39'4"	45'11"
L Length	ft in	40'6"	47' 1"
H Height	ft in	5'5"	5' 9"
Width	ft in	5'1"	5' 1"
Weight	lb	28,439	31,085



Industrial Stick

Stick length	ft in	24' 7"	29' 6"	34' 5"
L Length	ft in	25' 9"	30' 8"	35' 7"
H Height	ft in	4' 7"	4' 7"	4' 7"
Width	ft in	4'11"	4'11"	4'11"
Weight	lb	9,480	10,472	11,464



Counterweight

L Length	ft in	3'2"	
H Height	ft in	4'9"	
Width	ft in	11'	
Weight	lb	39,683	

Equipment



Undercarriage

S O

Three track guide per track	•	
Integrated travel drive	•	
Digging locks	•	
Protection on idler end	•	
Lubricated tracks	•	
Different track pad width with double-grouser or flat pads		•



Uppercarriage

S O

Engine hood with lift help	•	
Lockable tool box	•	
Handrails, non slip surfaces	•	
Tool kit	•	
Maintenance-free swing brake lock	•	
Maintenance-free HD-batteries	•	
Sound insulation	•	
Electric fuel tank filler pump		•
Pedal controlled positioning swing brake		•
Customized paint – compl. machine		•
Protection for front working light		•



Hydraulics

S O

Electronic pump regulation	•	
Stepless work mode selector	•	
Pressure storage for controlled lowering of attachments with engine turned off	•	
Hydraulic tank shut-off valve	•	
Pressure compensation	•	
Flow compensation	•	
Filter with integrated fine filter area (5 µm)	•	
Pressure test ports	•	
Additional hydraulic circuits		•
Bio-degradable hydraulic oils		•
Filter for secondary circuit		•
High lift circuit		•
Extra hydr. control for hydr. swivel		•



Engine

S O

Common rail injection	•	
Turbo charger	•	
Air filter with pre-cleaner, main and safety element	•	
Air filter with automatic dust ejector	•	
Automatic idling	•	
Main switch for electric circuit	•	
Cold start aid	•	
Conform with standard level IIIA/Tier 3	•	
Fuel pre-heater		•



Operator's Cab

S O

Profile and deep drawn component	•	
Tinted side windows	•	
Armored windshield	•	
Door with sliding window	•	
Washer-wiper for front and roof window	•	
6-way adjustable cloth suspension seat	•	
Seat and consoles independently adjustable	•	
Coat hook	•	
Air conditioning	•	
Dome light	•	
Sun blinds	•	
Radio installation prep-kit	•	
Removable handle for travel pedals	•	
Cigar lighter and ashtray	•	
Removable custom floor mat	•	
Storage and literature tray	•	
Digital instrumentation	•	
Digital instruments for oil temp. engine RPM and oil pressure	•	
Digital hour meter visible from outside	•	
AM/FM stereo radio w/cassette		•
Electric cool box		•
Air power seat adjustment with heating		•
Warning beacon		•
Additional headlights on cabin roof (front and rear)		•
Upper protection screen (FOPS)		•
Front guard tiltable		•
Electric drive away lock		•
Extinguisher		•



Attachment

S O

Cylinders with shock absorber	•	
Sealed pivots	•	
Two flood lights on the boom	•	
Automatic central lubrication system	•	
Regeneration plus	•	
Safety check valves	•	
Overload warning device		•
Hydraulic quick change tool adapter for grapple		•
Liebherr equipment program		•
Cylinder – rod protection		•

S = Standard, O = Option

Options and/or special attachments, supplied by vendors other than Liebherr, are only to be installed with the knowledge and approval of Liebherr to retain warranty.

