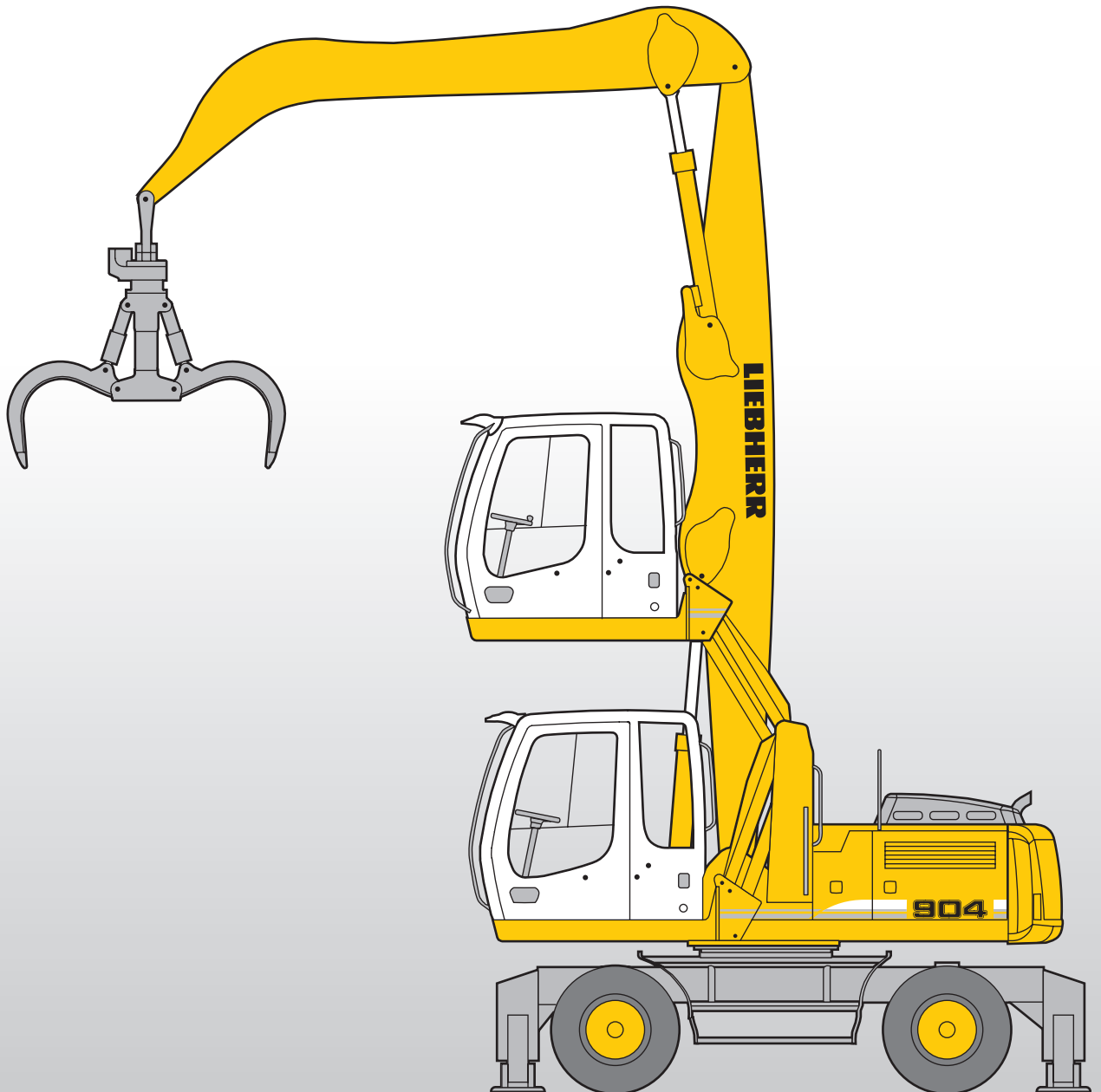


Machine for Industrial Applications

A 904 C

Litronic®

Operating Weight: 19,750 – 24,900 kg
Engine Output: 105 kW / 143 HP



LIEBHERR

Technical Data



Engine

Rating per ISO 9249	105 kW (143 HP) at 1800 RPM
Model	Liebherr D 934 S according to level IIIA/Tier 3
Type	4 cylinder in-line
Bore/Stroke	122/136 mm
Displacement	6,4 l
Engine operation	4-stroke diesel unit pump system turbo-charged and after-cooled reduced emissions
Cooling system	water-cooled and integrated motor oil cooler
Air cleaner	dry-type air cleaner with pre-cleaner, primary and safety elements
Fuel tank	350 l
Engine idling	sensor controlled
Electrical system	
Voltage	24 V
Batteries	2 x 110 Ah/12 V
Alternator	three phase current 28 V/80 A



Hydraulic System

Hydraulic pump	Liebherr, variable displacement, swash-plate double pump
Max. flow	2 x 189 l/min.
Max. hydr. pressure	350 bar
Hydraulic pump regulation and control	Liebherr-Synchron-Comfort-system (LSC) with electronic engine speed sensing regulation, pressure and flow compensation, load sensing and torque controlled swing drive priority
Hydraulic tank capacity	175 l
Hydraulic system capacity	max. 320 l
Filtration	one main return filter with integrated partial micro filtration (5 µm)
Cooling system	compact cooler, consisting of a water cooler, sandwiched with hydraulic oil cooler, fuel cooler and after-cooler cores and hydrostatically driven fan
Modes	can also be adjusted by the operator to adjust engine and hydraulic performance to match job conditions (Note: All modes provide full max. power)
LIFT	for precise lifting tasks
FINE	for precision work at high speed i.e. grading
ECO	for most economic performance at best environmental conditions
POWER	for max. output
Super-Finish	additional operator adjustable work speed function for further increased feathering. Applies to all modes and all control functions
RPM adjustment	stepless adjustment of engine output via rpm
Tool Control (Option)	ten preadjustable pump flows and pressures for add on tools



Hydraulic Controls

Power distribution	via control valve with integrated safety valves, simultaneous and independent operation of travel drive, swing drive and work
Control type	
Attachment and swing	proportional via joystick levers
Travel	proportional via foot pedal
Additional functions	via switch and/or proportional foot pedals



Swing Drive

Drive	Liebherr swashplate motor with torque control and integrated brake valve
Transmission	Liebherr compact planetary reduction gear
Swing ring	Liebherr sealed single race ball bearing swing ring, internal teeth
Swing speed	0–9,0 RPM
Swing torque	46 kNm
Holding brake	wet discs (spring applied – pressure released)
Option	pedal controlled positioning brake



Operator's Cab

Cab	resiliently mounted, sound insulated, tinted windows, front window stores overhead, door with sliding window
Operator's seat	fully adjustable, shockabsorbing suspension, adjustable to operator's weight and size, 6-way adjustable Liebherr seat
Joysticks	integrated into adjustable seat consoles
Monitoring	menu driven query of current operating conditions via the LCD display. Automatic monitoring, display, warning (acoustical and optical signal) and saving machine data, for example, engine overheating, low engine oil pressure or low hydraulic oil level
Air conditioning	standard air conditioning, combined cooler/heater, additional dust filter in fresh air/recirculated
Noise emission	
ISO 6396	L_{pA} (inside cab) = 73 dB(A)
2000/14/EC	L_{WA} (surround noise) = 100 dB(A)
Sound level in correspondence with "Blue Angel" guidelines.	



Undercarriage

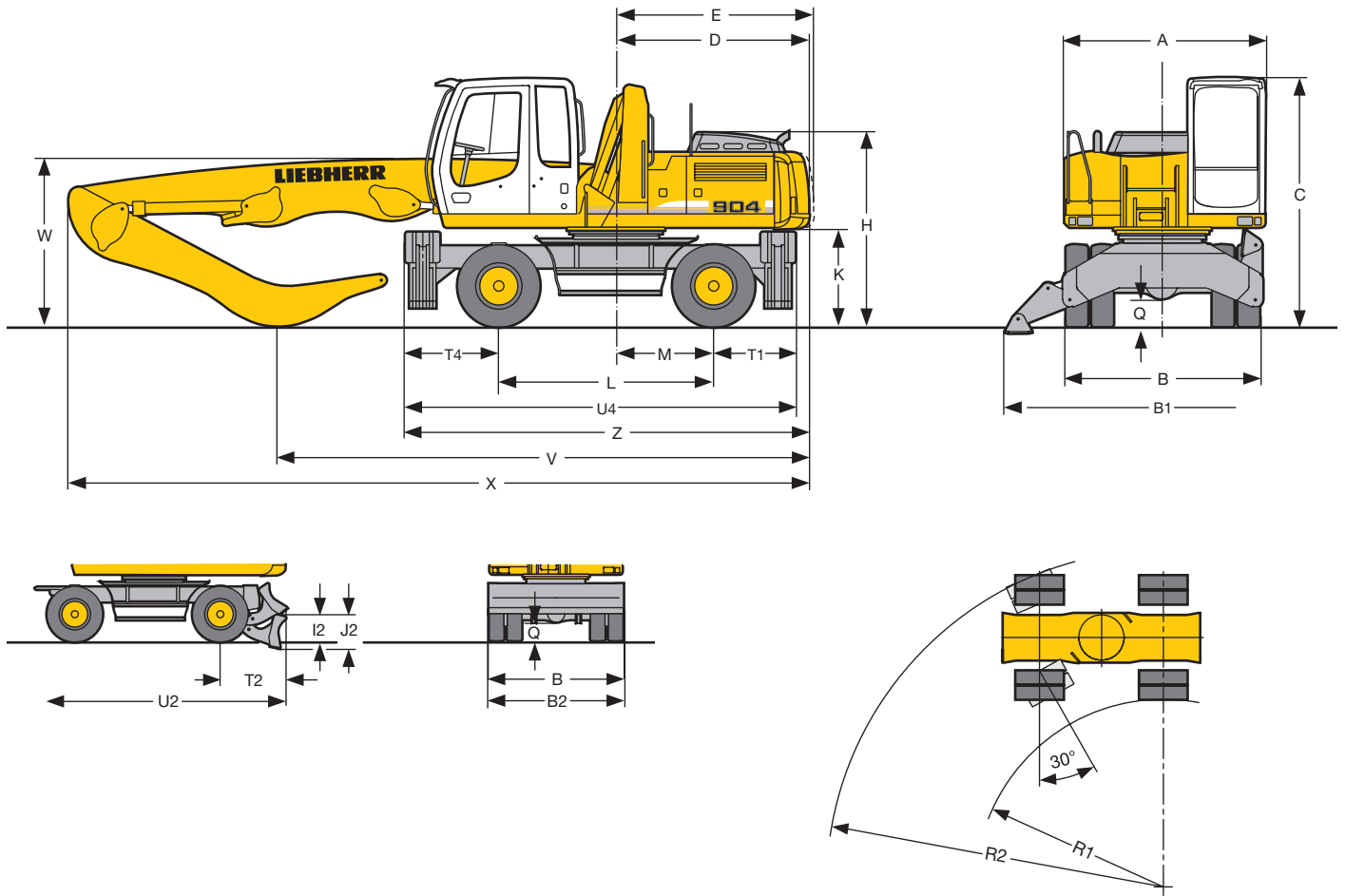
Drive	variable flow swashplate motor with automatic brake valve
Transmission	oversized two speed power shift transmission with additional creeper speed
Travel speed	0– 2,5 km/h (creeper speed off road) 0– 5,0 km/h (off road) 0– 9,0 km/h (creeper speed on road) 0–20,0 km/h (road travel)
Axles	40 t excavator axles; automatic or operator controlled front axle oscillation lock
Brakes	steering and rigid axle with wet, maintenance-free multi disc brakes with minimized backlash. Spring applied/pressure released parking brake integrated into gear box
Stabilization	4-point outriggers



Attachment

Type	High-strength steel plates at highly-stressed points for the toughest requirements. Complex and stable mountings of attachment and cylinders. Unrivalled strength, even at high loads
Hydraulic cylinders	Liebherr cylinders with special seal system. Shock absorption
Pivots	sealed, low maintenance
Lubrication	Liebherr semi-automatic central lubrication system

Dimensions



	mm
A	2550
B	2550
B1	3965
B2	2550
B2*	2750
C	3160
D	2470
E	2515
H	2470
I2	515
J2	645
K	1235
L	2750
M	1250
Q	350
R1	4300
R2	7380
T1	1040
T2	1265
T4	1190
U2	4755
U4	4980
Z	5160

* = EW-undercarriage/Standard cab

E = Tail radius

Tires 10.00-20

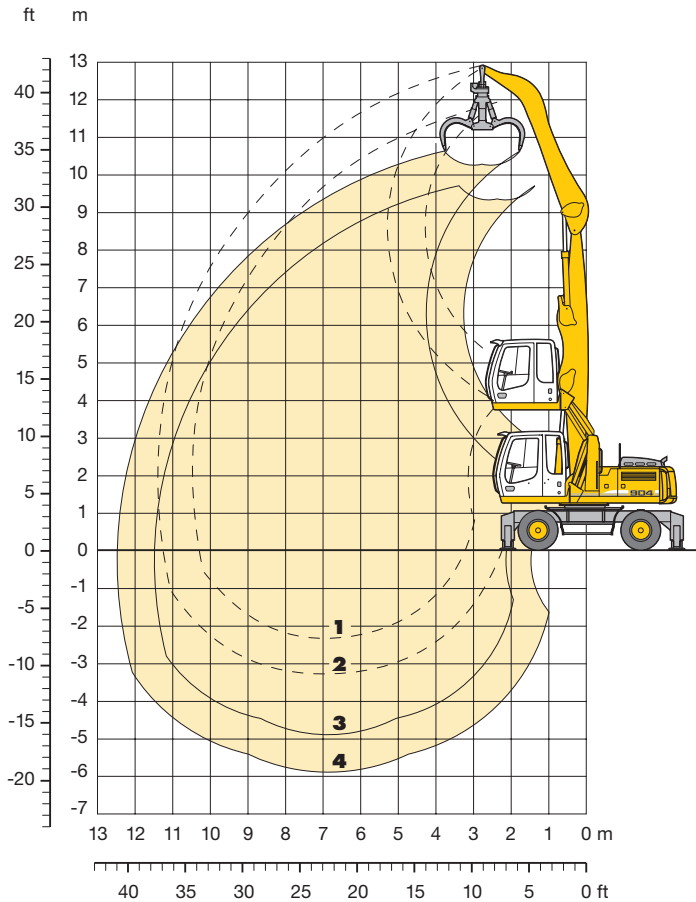
	Industrial Stick	Industrial-Type Straight Boom 6,60 m	Industrial-Type Gooseneck Boom 6,00 m
	m	Prop up blade mm	4 pt. outr. mm
V	4,00	6850	6800
	5,00	5800	6250*
W	4,00	2200	2250
	5,00	2200	2800*
X	4,00	9650	9600
	5,00	9650	9800*

Dimensions are with attachment over steering axle

* Attachment over digging axle for shorter transport dimensions

Industrial Attachment

for Scrap Handling with Straight Boom 6,60 m



Attachment Envelope

Industrial-type straight boom pinned in rear bearing of boom foot bracket

- 1 with industrial stick 4,00 m
- 2 with industrial stick 5,00 m
- 3 with industrial stick 4,00 m and grapple model 65
- 4 with industrial stick 5,00 m and grapple model 65

Operating Weight

The operating weight includes basic machine A 904 C Litronic with 4 pt. outriggers, hydr. cab elevation, 8 solid tires plus spacer rings and industrial attachment with industrial-type straight boom 6,60 m.

with grapple model 65/0,60 m ³ semi-closed tines and industrial stick 4,00 m and industrial stick 5,00 m	Weight
and industrial stick 4,00 m	24200 kg
and industrial stick 5,00 m	24300 kg

Lift Capacities

for Scrap Handling with Straight Boom 6,60 m

Industrial Stick 4,00 m

m	Undercarriage	3,0 m		4,5 m		6,0 m		7,5 m		9,0 m		10,5 m		m		
12,0	Stabilizers raised 4 pt. outriggers down															
10,5	Stabilizers raised 4 pt. outriggers down			6,1 8,3*	8,3* 8,3*									3,9 5,8*	5,8* 5,8*	5,90
9,0	Stabilizers raised 4 pt. outriggers down			6,3 9,0*	9,0* 9,0*	3,9 7,5*	6,2 7,5*	2,6 5,5	4,2 5,6*					2,5 5,0*	4,0 5,0*	7,70
7,5	Stabilizers raised 4 pt. outriggers down			6,3 9,1*	9,1* 9,1*	3,9 7,5*	6,2 7,5*	2,7 5,6	4,3 6,4*					1,9 4,2	3,1 4,6*	8,88
6,0	Stabilizers raised 4 pt. outriggers down			6,0 9,6*	9,6* 9,6*	3,8 7,7*	6,0 7,7*	2,6 5,5	4,2 6,5*	1,9 4,1	3,1 5,5*			1,6 3,6	2,7 4,5*	9,68
4,5	Stabilizers raised 4 pt. outriggers down	10,1 15,7*	15,7* 15,7*	5,4 10,6*	9,1 10,6*	3,5 7,6	5,7 8,1*	2,4 5,4	4,0 6,6*	1,8 4,0	3,0 5,5*			1,4 3,3	2,4 4,5*	10,20
3,0	Stabilizers raised 4 pt. outriggers down	2,2* 2,2*	2,2* 2,2*	4,7 11,5*	8,3 11,5*	3,1 7,2	5,4 8,5*	2,3 5,1	3,8 6,7*	1,7 3,9	2,9 5,4*			1,3 3,1	2,3 4,2*	10,47
1,5	Stabilizers raised 4 pt. outriggers down			4,1 10,1*	7,6 10,1*	2,8 6,9	5,0 8,4*	2,1 5,0	3,7 6,6*	1,6 3,8	2,8 5,2*	1,3 3,1	2,3 3,8*	1,3 3,0	2,2 3,8*	10,52
0	Stabilizers raised 4 pt. outriggers down			3,8 7,5*	7,2 7,5*	2,6 6,6	4,8 7,8*	2,0 4,8	3,5 6,1*	1,5 3,7	2,7 4,7*			1,3 3,1	2,3 3,3*	10,35
-1,5	Stabilizers raised 4 pt. outriggers down			3,8 7,9*	7,2 7,9*	2,6 6,5*	4,7 6,5*	1,9 4,8	3,5 5,1*	1,5 3,7	2,7 3,8*			1,5 3,4*	2,6 3,4*	9,35
-3,0	Stabilizers raised 4 pt. outriggers down															

Industrial Stick 5,00 m

m	Undercarriage	3,0 m		4,5 m		6,0 m		7,5 m		9,0 m		10,5 m		m		
12,0	Stabilizers raised 4 pt. outriggers down			6,2 6,6*	6,6* 6,6*									4,7 5,4*	5,4* 5,4*	5,28
10,5	Stabilizers raised 4 pt. outriggers down					4,1 6,5*	6,4 6,5*	2,7 4,4*	4,3 4,4*					2,6 4,3*	4,2 4,3*	7,56
9,0	Stabilizers raised 4 pt. outriggers down					4,2 6,8*	6,5 6,8*	2,8 5,8	4,4 6,0*	1,9 3,9*	3,1 3,9*			1,9 3,8*	3,1 3,8*	9,02
7,5	Stabilizers raised 4 pt. outriggers down					4,2 6,9*	6,5 6,9*	2,8 5,8	4,4 6,0*	2,0 4,2	3,2 5,3*			1,5 3,4	2,6 3,6*	10,05
6,0	Stabilizers raised 4 pt. outriggers down					4,0 7,1*	6,3 7,1*	2,7 5,7	4,3 6,1*	1,9 4,2	3,2 5,3*	1,4 3,2	2,4 4,3*	1,3 3,0	2,3 3,5*	10,76
4,5	Stabilizers raised 4 pt. outriggers down			5,9 9,6*	9,6* 9,6*	3,7 7,6*	6,0 7,6*	2,5 5,5	4,2 6,3*	1,8 4,1	3,1 5,4*	1,4 3,2	2,4 4,5	1,2 2,8	2,1 3,5*	11,23
3,0	Stabilizers raised 4 pt. outriggers down	9,3 16,6*	16,6* 16,6*	5,1 10,8*	8,8 10,8*	3,3 7,5	5,6 8,1*	2,3 5,2	3,9 6,5*	1,7 3,9	2,9 5,4*	1,3 3,1	2,3 4,4	1,1 2,7	2,0 3,5*	11,47
1,5	Stabilizers raised 4 pt. outriggers down	2,7* 2,7*	2,7* 2,7*	4,3 11,1	7,9 11,5*	2,9 7,0	5,1 8,4*	2,1 5,0	3,7 6,6*	1,6 3,8	2,8 5,3*	1,2 3,0	2,2 4,3*	1,0 2,6	1,9 3,4*	11,52
0	Stabilizers raised 4 pt. outriggers down	2,7* 2,7*	2,7* 2,7*	3,8 9,4*	7,3 9,4*	2,6 6,7	4,8 8,1*	2,0 4,8	3,5 6,3*	1,5 3,7	2,7 5,0*	1,2 3,0	2,2 3,9*	1,0 2,7	1,9 3,0*	11,36
-1,5	Stabilizers raised 4 pt. outriggers down	3,8* 3,8*	3,8* 3,8*	3,6 8,2*	7,0 8,2*	2,5 6,5	4,6 7,3*	1,8 4,7	3,4 5,7*	1,4 3,6	2,6 4,4*	1,2 2,9	2,1 3,1*	1,1 2,8*	2,1 2,8*	10,76
-3,0	Stabilizers raised 4 pt. outriggers down					2,4 5,8*	4,6 5,8*	1,8 4,6*	3,3 4,6*					1,5 3,6*	2,7 3,6*	8,75

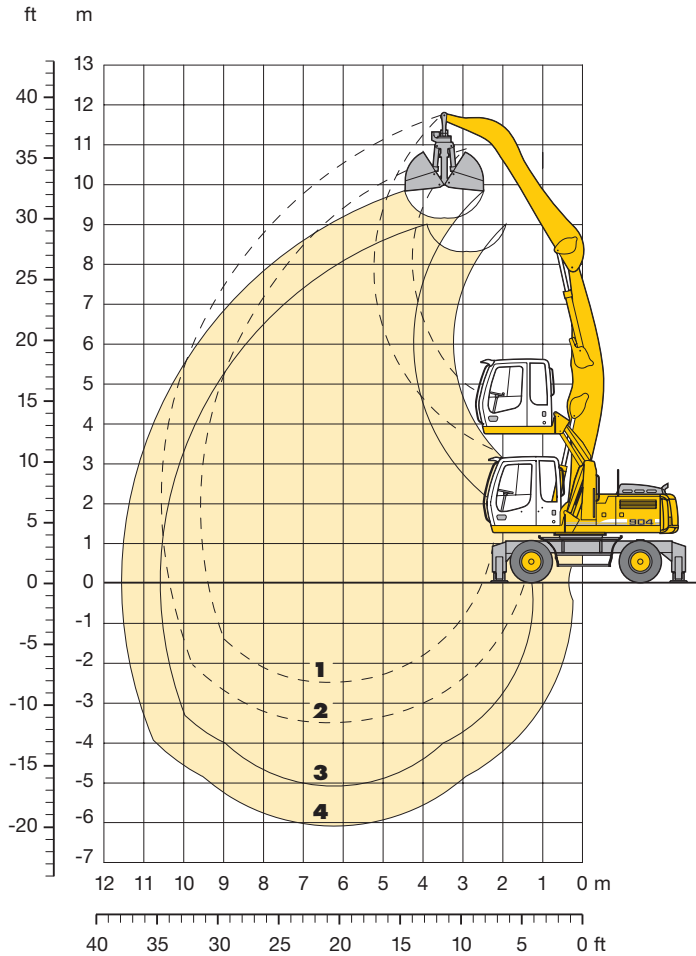
Height Can be slewed through 360° In longitudinal position of undercarriage Max. reach * Limited by hydr. capacity

The lift capacities on the stick end without attachment are stated in metric tons (t) and are valid on a firm, level supporting surface with blocked oscillating axle. These capacities can be slewed through 360° with the undercarriage in the transverse position. Capacities in the longitudinal position of the undercarriage (+/- 15°) are specified over the steering axle with the stabilisers raised and over the rigid axle with the stabilisers down. Indicated loads comply with the ISO 10567 standard and do not exceed 75 % of tipping or 87 % of hydraulic capacity.

In accordance with the harmonised EU Standard EN 474-5, hydraulic excavators used for lifting operations must be equipped with pipe rupture protection devices on the hoist cylinders and an overload warning device.

Industrial Attachment

for Loose Material with Gooseneck Boom 6,00 m



Attachment Envelope

Industrial-type gooseneck boom pinned in rear bearing of boom foot bracket

- 1** with industrial stick 4,00 m
- 2** with industrial stick 5,00 m
- 3** with industrial stick 4,00 m and clamshell model 10 B
- 4** with industrial stick 5,00 m and clamshell model 10 B

Operating Weight

The operating weight includes basic machine A 904 C Litronic with 4 pt. outriggers, hydr. cab elevation, 8 solid tires plus spacer rings and industrial attachment with industrial-type gooseneck boom 6,00 m.

with clamshell model 10 B/1,00 m ³ shells for loose material and industrial stick 4,00 m	Weight
and industrial stick 4,00 m	23300 kg
and industrial stick 5,00 m	23500 kg

Lift Capacities

for Loose Material with Gooseneck Boom 6,00 m

Industrial Stick 4,00 m

m	Undercarriage	3,0 m		4,5 m		6,0 m		7,5 m		9,0 m		10,5 m		m		
12,0	Stabilizers raised 4 pt. outriggers down															
10,5	Stabilizers raised 4 pt. outriggers down													6,1* 6,1*	6,1* 6,1*	4,13
9,0	Stabilizers raised 4 pt. outriggers down			6,4 8,1*	8,1* 8,1*	4,0 6,0*	6,0* 6,0*							3,5 4,9*	4,9* 4,9*	6,47
7,5	Stabilizers raised 4 pt. outriggers down			6,4 8,0*	8,0* 8,0*	4,0 7,0*	6,3 7,0*	2,8 5,6*	4,4 5,6*					2,5 4,6*	4,0 4,6*	7,85
6,0	Stabilizers raised 4 pt. outriggers down			6,2 8,5*	8,5* 8,5*	3,9 7,2*	6,2 7,2*	2,7 5,6	4,3 6,3*					2,1 4,4	3,3 4,5*	8,75
4,5	Stabilizers raised 4 pt. outriggers down	11,0 13,1*	13,1* 13,1*	5,8 9,6*	9,5 9,6*	3,7 7,7*	6,0 7,7*	2,6 5,5	4,2 6,5*	1,9 4,1	3,1 5,6*			1,8 3,9	3,0 4,5*	9,32
3,0	Stabilizers raised 4 pt. outriggers down	9,3 17,0*	17,0* 17,0*	5,2 11,0*	8,8 11,0*	3,5 7,6	5,7 8,3*	2,5 5,4	4,1 6,7*	1,9 4,1	3,1 5,6*			1,7 3,7	2,8 4,7*	9,62
1,5	Stabilizers raised 4 pt. outriggers down	4,7* 4,7*	4,7* 4,7*	4,6 11,4	8,2 11,8*	3,2 7,2	5,4 8,7*	2,3 5,2	3,9 6,8*	1,8 4,0	3,0 5,5*			1,6 3,6	2,7 4,9*	9,67
0	Stabilizers raised 4 pt. outriggers down	4,8* 4,8*	4,8* 4,8*	4,3 11,0	7,8 11,5*	3,0 7,0	5,1 8,5*	2,2 5,0	3,8 6,6*	1,7 3,9	2,9 5,1*			1,6 3,6	2,7 4,6*	9,48
-1,5	Stabilizers raised 4 pt. outriggers down			4,2 10,1*	7,6 10,1*	2,9 6,9	5,0 7,7*	2,2 5,0	3,7 5,9*					1,7 3,9	2,9 4,4*	8,93
-3,0	Stabilizers raised 4 pt. outriggers down															

Industrial Stick 5,00 m

m	Undercarriage	3,0 m		4,5 m		6,0 m		7,5 m		9,0 m		10,5 m		m		
12,0	Stabilizers raised 4 pt. outriggers down															
10,5	Stabilizers raised 4 pt. outriggers down					4,1 4,5*	4,5* 4,5*							3,9 4,3*	4,3* 4,3*	6,12
9,0	Stabilizers raised 4 pt. outriggers down					4,2 6,3*	6,3* 6,3*	2,9 4,5*	4,5 4,5*					2,6 3,8*	3,8* 3,8*	7,87
7,5	Stabilizers raised 4 pt. outriggers down					4,3 6,2*	6,2* 6,2*	2,9 5,7*	4,5 5,7*	2,0 3,6*	3,3 3,6*			2,0 3,5*	3,3 3,5*	9,03
6,0	Stabilizers raised 4 pt. outriggers down					4,2 6,4*	6,4* 6,4*	2,9 5,8*	4,5 5,8*	2,0 4,3	3,3 5,3*			1,7 3,5*	2,8 3,5*	9,82
4,5	Stabilizers raised 4 pt. outriggers down			6,2 8,2*	8,2* 8,2*	3,9 7,0*	6,2 7,0*	2,7 5,7	4,3 6,1*	2,0 4,2	3,2 5,3*			1,5 3,3	2,5 3,5*	10,33
3,0	Stabilizers raised 4 pt. outriggers down	10,5 14,1*	14,1* 14,1*	5,6 9,8*	9,3 9,8*	3,6 7,7*	5,9 7,7*	2,6 5,5	4,1 6,4*	1,9 4,1	3,1 5,5*	1,4 3,2	2,4 3,9*	1,4 3,2	2,4 3,6*	10,60
1,5	Stabilizers raised 4 pt. outriggers down	8,5 10,6*	10,6* 10,6*	4,9 11,2*	8,5 11,2*	3,3 7,4	5,5 8,3*	2,4 5,2	3,9 6,7*	1,8 4,0	3,0 5,5*	1,4 3,2	2,4 4,3*	1,3 3,1	2,3 3,8*	10,65
0	Stabilizers raised 4 pt. outriggers down	5,6* 5,6*	5,6* 5,6*	4,4 11,1	7,8 11,7*	3,0 7,0	5,1 8,6*	2,2 5,0	3,7 6,7*	1,7 3,9	2,9 5,4*			1,3 3,1	2,3 4,1*	10,48
-1,5	Stabilizers raised 4 pt. outriggers down	5,8* 5,8*	5,8* 5,8*	4,1 10,7	7,5 11,0*	2,8 6,8	4,9 8,2*	2,1 4,9	3,6 6,4*	1,6 3,8	2,8 4,9*			1,4 3,3	2,4 3,9*	10,08
-3,0	Stabilizers raised 4 pt. outriggers down			4,0 9,4*	7,4 9,4*	2,7 6,7	4,9 7,1*	2,0 4,9	3,6 5,5*					1,7 4,1	3,0 4,5*	8,49

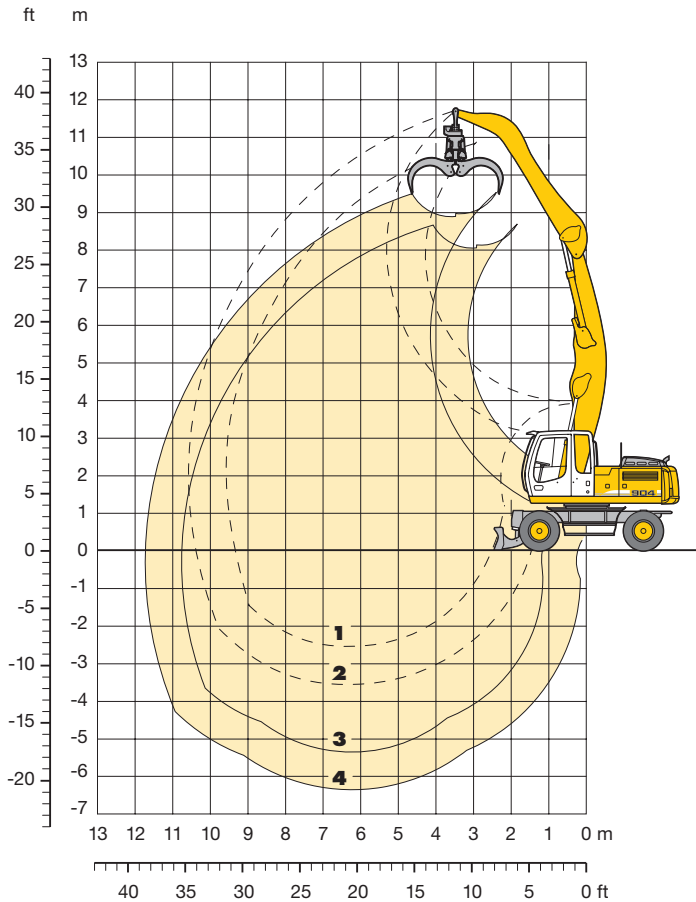
Height Can be slewed through 360° In longitudinal position of undercarriage Max. reach * Limited by hydr. capacity

The lift capacities on the stick end without attachment are stated in metric tons (t) and are valid on a firm, level supporting surface with blocked oscillating axle. These capacities can be slewed through 360° with the undercarriage in the transverse position. Capacities in the longitudinal position of the undercarriage (+/- 15°) are specified over the steering axle with the stabilisers raised and over the rigid axle with the stabilisers down. Indicated loads comply with the ISO 10567 standard and do not exceed 75 % of tipping or 87 % of hydraulic capacity.

In accordance with the harmonised EU Standard EN 474-5, hydraulic excavators used for lifting operations must be equipped with pipe rupture protection devices on the hoist cylinders and an overload warning device.

Industrial Attachment

for Wood Handling with Gooseneck Boom 6,00 m



Attachment Envelope

Industrial-type gooseneck boom pinned in rear bearing of boom foot bracket

- 1** with industrial stick 4,00 m
- 2** with industrial stick 5,00 m
- 3** with industrial stick 4,00 m and wood grapple
- 4** with industrial stick 5,00 m and wood grapple

Operating Weight

The operating weight includes basic machine A 904 C EW Litronic® with prop-up blade, without cab elevation, 8 tires plus spacer rings and industrial attachment with industrial-type gooseneck boom 6,00 m.

	Weight
with wood grapple 0,80 m ² rotary drive with 2 motors	
with industrial stick 4,00 m	19750 kg
with industrial stick 5,00 m	19850 kg

Lift Capacities

for Wood Handling with Gooseneck Boom 6,00 m

Industrial Stick 4,00 m

m	Undercarriage	3,0 m		4,5 m		6,0 m		7,5 m		9,0 m		10,5 m		m		
12,0	Stabilizers raised Prop up blade down 2 pt. outriggers down															
10,5	Stabilizers raised Prop up blade down 2 pt. outriggers down													6,1* 6,1* 6,1*	6,1* 6,1* 6,1*	4,08
9,0	Stabilizers raised Prop up blade down 2 pt. outriggers down			5,9 6,5 7,3	8,1* 8,1* 8,1*	3,6 4,0 4,5	5,6 6,0* 6,0*							3,2 3,5 4,0	4,9 5,0* 5,0*	6,44
7,5	Stabilizers raised Prop up blade down 2 pt. outriggers down			5,9 6,5 7,4	8,0* 8,0* 8,0*	3,7 4,0 4,6	5,7 7,0* 7,0*	2,5 2,7 3,1	3,9 5,5* 5,5*					2,3 2,5 2,9	3,6 4,6* 4,6*	7,83
6,0	Stabilizers raised Prop up blade down 2 pt. outriggers down			5,7 6,3 7,2	8,5* 8,5* 8,5*	3,6 4,0 4,5	5,6 7,2* 7,2*	2,4 2,7 3,1	3,8 6,3* 6,2					1,8 2,0 2,3	2,9 4,5* 4,5*	8,74
4,5	Stabilizers raised Prop up blade down 2 pt. outriggers down	10,3 11,6 13,0*	13,0* 13,0* 13,0*	5,3 5,9 6,7	8,6 9,5* 9,5*	3,4 3,7 4,2	5,3 7,7* 7,7*	2,3 2,6 3,0	3,7 6,4 6,0	1,7 1,9 2,2	2,7 4,7 4,4			1,6 1,8 2,0	2,6 4,5 4,2	9,31
3,0	Stabilizers raised Prop up blade down 2 pt. outriggers down	8,6 9,8 11,6	16,1 16,9* 16,9*	4,7 5,3 6,1	7,9 10,9* 10,9*	3,1 3,4 3,9	5,0 8,3* 8,3*	2,2 2,4 2,8	3,6 6,2 5,8	1,6 1,8 2,1	2,7 4,6 4,3			1,4 1,6 1,9	2,4 4,2 3,9	9,61
1,5	Stabilizers raised Prop up blade down 2 pt. outriggers down	4,7* 4,7* 4,7*	4,7* 4,7* 4,7*	4,1 4,7 5,5	7,2 11,8* 11,8*	2,8 3,2 3,6	4,7 8,7* 8,1	2,0 2,3 2,6	3,4 6,1 5,6	1,5 1,7 2,0	2,6 4,5 4,2			1,4 1,6 1,8	2,3 4,1 3,8	9,67
0	Stabilizers raised Prop up blade down 2 pt. outriggers down	4,8* 4,8* 4,8*	4,8* 4,8* 4,8*	3,8 4,3 5,1	6,8 11,5* 11,5*	2,6 2,9 3,4	4,5 8,5 7,9	1,9 2,2 2,5	3,3 5,9 5,5	1,5 1,7 2,0	2,5 4,5 4,2			1,4 1,6 1,8	2,4 4,1 3,9	9,49
-1,5	Stabilizers raised Prop up blade down 2 pt. outriggers down			3,7 4,2 4,9	6,6 10,1* 10,1*	2,5 2,8 3,3	4,3 7,7* 7,7	1,8 2,1 2,5	3,2 5,8 5,4					1,5 1,7 1,9	2,5 4,4* 4,2	8,95
-3,0	Stabilizers raised Prop up blade down 2 pt. outriggers down															

Industrial Stick 5,00 m

m	Undercarriage	3,0 m		4,5 m		6,0 m		7,5 m		9,0 m		10,5 m		m		
12,0	Stabilizers raised Prop up blade down 2 pt. outriggers down															
10,5	Stabilizers raised Prop up blade down 2 pt. outriggers down					3,7 4,1 4,5*	4,5* 4,5* 4,5*							3,6 4,0 4,3*	4,3* 4,3* 4,3*	6,08
9,0	Stabilizers raised Prop up blade down 2 pt. outriggers down					3,9 4,3 4,8	5,9 6,2* 6,2*	2,6 2,8 3,2	4,0 4,5* 4,5*					2,3 2,6 2,9	3,7 3,8* 3,8*	7,84
7,5	Stabilizers raised Prop up blade down 2 pt. outriggers down					3,9 4,3 4,8	5,9 6,2* 6,2*	2,6 2,9 3,3	4,0 5,7* 5,7*	1,8 2,0 2,3	2,9 3,6* 3,6*			1,8 2,0 2,3	2,9 3,6* 3,6*	9,01
6,0	Stabilizers raised Prop up blade down 2 pt. outriggers down					3,8 4,2 4,7	5,8 6,4* 6,4*	2,6 2,8 3,2	4,0 5,8* 5,8*	1,8 2,0 2,3	2,9 4,9 4,6			1,5 1,7 1,9	2,4 3,5* 3,5*	9,81
4,5	Stabilizers raised Prop up blade down 2 pt. outriggers down			5,7 6,3 7,2	8,2* 8,2* 8,2*	3,6 3,9 4,5	5,6 7,0* 7,0*	2,4 2,7 3,1	3,8 6,0* 6,0*	1,7 1,9 2,2	2,8 4,8 4,5			1,3 1,5 1,7	2,2 3,5* 3,5*	10,32
3,0	Stabilizers raised Prop up blade down 2 pt. outriggers down	9,8 11,1 13,0	14,0* 14,0* 14,0*	5,1 5,7 6,5	8,3 9,8* 9,8*	3,3 3,6 4,1	5,2 7,7* 7,7*	2,3 2,5 2,9	3,6 6,4 6,0	1,6 1,8 2,1	2,7 4,7 4,4	1,2 1,4 1,6	2,1 3,6 3,4	1,2 1,4 1,6	2,0 3,6* 3,3	10,60
1,5	Stabilizers raised Prop up blade down 2 pt. outriggers down	7,8 9,0 10,7	10,9* 10,9* 10,9*	4,4 4,9 5,7	7,5 11,2* 11,2*	2,9 3,3 3,8	4,8 8,3* 8,3*	2,1 2,3 2,7	3,4 6,1 5,7	1,5 1,7 2,0	2,6 4,6 4,3	1,2 1,3 1,6	2,0 3,6 3,3	1,1 1,3 1,5	2,0 3,5 3,3	10,65
0	Stabilizers raised Prop up blade down 2 pt. outriggers down	5,6* 5,6* 5,6*	5,6* 5,6* 5,6*	3,8 4,4 5,2	6,9 11,7* 11,7*	2,6 3,0 3,4	4,5 8,6 7,9	1,9 2,2 2,5	3,3 5,9 5,5	1,4 1,6 1,9	2,5 4,4 4,2			1,1 1,3 1,5	2,0 3,5 3,3	10,48
-1,5	Stabilizers raised Prop up blade down 2 pt. outriggers down	5,8* 5,8* 5,8*	5,8* 5,8* 5,8*	3,6 4,1 4,9	6,5 11,1* 11,1*	2,4 2,8 3,2	4,3 8,2* 7,7	1,8 2,0 2,4	3,1 5,8 5,4	1,4 1,6 1,9	2,4 4,4 4,1			1,2 1,3 1,6	2,1 3,7 3,5	10,09
-3,0	Stabilizers raised Prop up blade down 2 pt. outriggers down			3,5 4,0 4,8	6,5 9,4* 9,4*	2,3 2,7 3,2	4,2 7,2* 7,2*	1,7 2,0 2,3	3,1 5,5* 5,3					1,5 1,7 2,0	2,6 4,5* 4,4	8,54

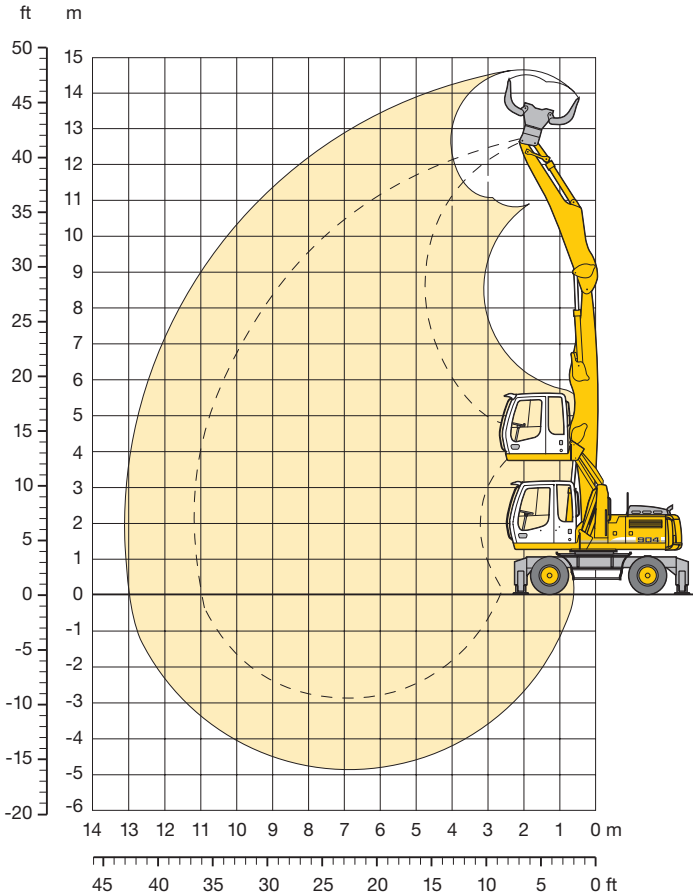
Height Can be slewed through 360° In longitudinal position of undercarriage Max. reach * Limited by hydr. capacity

The lift capacities on the stick end without attachment are stated in metric tons (t) and are valid on a firm, level supporting surface with blocked oscillating axle. These capacities can be slewed through 360° with the undercarriage in the transverse position. Capacities in the longitudinal position of the undercarriage (+/- 15°) are specified over the steering axle with the stabilisers raised and over the rigid axle with the stabilisers down. Indicated loads comply with the ISO 10567 standard and do not exceed 75 % of tipping or 87 % of hydraulic capacity.

In accordance with the harmonised EU Standard EN 474-5, hydraulic excavators used for lifting operations must be equipped with pipe rupture protection devices on the hoist cylinders and an overload warning device.

Industrial Attachment

for Recycling with Straight Boom 6,60 m



Attachment Envelope

Industrial-type straight boom pinned in rear bearing of boom foot bracket

with industrial stick 4,50 m and sorting grab

Operating Weight

The operating weight includes basic machine A 904 C Litronic[®] with 4 pt. outriggers, hydr. cab elevation, 8 solid tires plus spacer rings and industrial attachment with industrial-type straight boom 6,60 m.

with sorting grab	Weight
with industrial stick with tipping kinematics 4,50 m	24900 kg

Lift Capacities

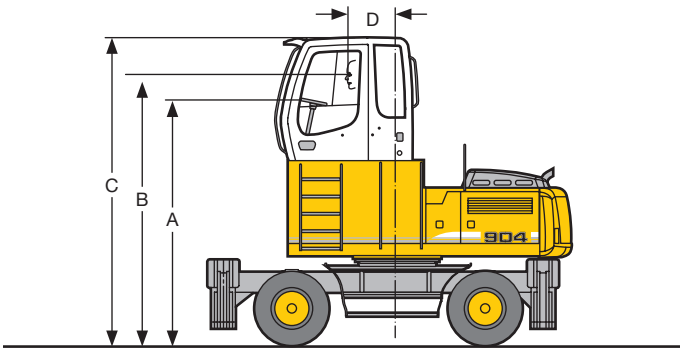
Industrial Stick 4,50 m

m	Undercarriage	3,0 m		4,5 m		6,0 m		7,5 m		9,0 m		10,5 m		Max. reach		m
		Stabilizers raised	4 pt. outriggers down	Stabilizers raised	4 pt. outriggers down	Stabilizers raised	4 pt. outriggers down	Stabilizers raised	4 pt. outriggers down	Stabilizers raised	4 pt. outriggers down	Stabilizers raised	4 pt. outriggers down	Stabilizers raised	4 pt. outriggers down	
12,0	Stabilizers raised 4 pt. outriggers down													5,6 6,7*	6,7* 6,7*	4,43
10,5	Stabilizers raised 4 pt. outriggers down			6,1 8,2*	8,2*	3,6 6,8*	5,9 6,8*							2,5 4,8*	4,3 4,8*	7,00
9,0	Stabilizers raised 4 pt. outriggers down					3,7 6,8*	6,1 6,8*	2,3 5,3	4,0 5,8*					1,6 4,0	2,9 4,1*	8,56
7,5	Stabilizers raised 4 pt. outriggers down					3,7 6,8*	6,0 6,8*	2,3 5,3	4,0 5,7*	1,5 3,8	2,7 4,9*			1,2 3,2	2,3 3,8*	9,64
6,0	Stabilizers raised 4 pt. outriggers down			5,9 8,6*	8,6*	3,5 7,0*	5,8 7,0*	2,3 5,2	3,9 5,8*	1,5 3,7	2,7 4,9*			0,9 2,8	2,0 3,6*	10,38
4,5	Stabilizers raised 4 pt. outriggers down	7,6* 7,6*	7,6* 7,6*	5,2 9,7*	9,0 9,7*	3,2 7,4	5,5 7,4*	2,1 5,0	3,7 6,0*	1,4 3,6	2,6 4,9*	0,9 2,7	1,9 4,0*	0,8 2,5	1,8 3,5*	10,87
3,0	Stabilizers raised 4 pt. outriggers down	4,1* 4,1*	4,1* 4,1*	4,4 10,6*	8,0 10,6*	2,8 6,9	5,0 7,8*	1,9 4,8	3,4 6,1*	1,3 3,5	2,5 4,9*	0,9 2,7	1,9 3,9*	0,7 2,4	1,6 3,3*	11,12
1,5	Stabilizers raised 4 pt. outriggers down			3,6 10,3	7,1 10,8*	2,4 6,4	4,5 7,8*	1,6 4,5	3,2 6,0*	1,1 3,4	2,4 4,7*	0,8 2,6	1,8 3,6*	0,7 2,3	1,6 2,9*	11,17
0	Stabilizers raised 4 pt. outriggers down	1,2* 1,2*	1,2* 1,2*	3,1 6,7*	6,5 6,7*	2,1 6,1	4,2 7,4*	1,5 4,3	3,0 5,6*	1,0 3,3	2,3 4,3*	0,8 2,6	1,8 3,1*	0,7 2,4	1,6 2,4*	11,01
-1,5	Stabilizers raised 4 pt. outriggers down			3,0 7,0*	6,4 7,0*	1,9 5,9	4,1 6,3*	1,4 4,2	2,9 4,8*	1,0 3,2	2,2 3,6*			0,8 2,6*	1,9 2,6*	10,09

↑ Height ↺ Can be slewed through 360° 📏 In longitudinal position of undercarriage 🚧 Max. reach * Limited by hydr. capacity

The lift capacities on the stick end without attachment are stated in metric tons (t) and are valid on a firm, level supporting surface with blocked oscillating axle. These capacities can be slewed through 360° with the undercarriage in the transverse position. Capacities in the longitudinal position of the undercarriage (+/- 15°) are specified over the steering axle with the stabilisers raised and over the rigid axle with the stabilisers down. Indicated loads comply with the ISO 10567 standard and do not exceed 75 % of tipping or 87 % of hydraulic capacity. In accordance with the harmonised EU Standard EN 474-5, hydraulic excavators used for lifting operations must be equipped with pipe rupture protection devices on the hoist cylinders and an overload warning device.

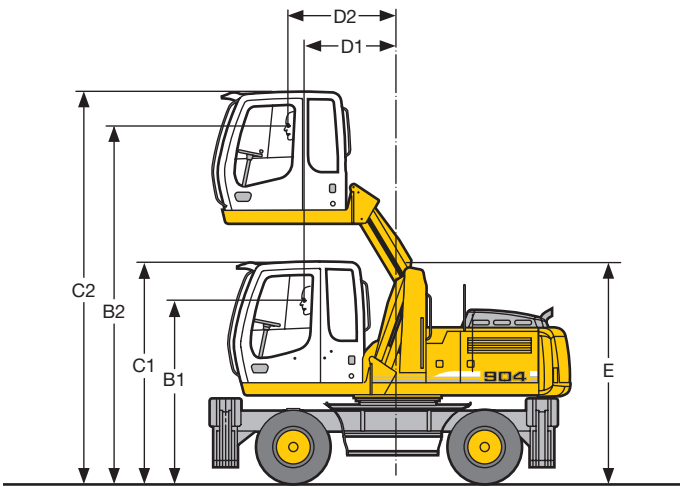
Choice of Cab Elevations and Cab Protections



Rigid Cab Elevation

Height	mm	800	1200	1500
A	mm	3120	3520	3820
B	mm	3460	3860	4160
C	mm	3960	4360	4660
D	mm	670	670	670

A rigid cab elevation has a fixed eye level height. For a lower transport height the shell of the cab can be removed. The overall height is then dimension A.

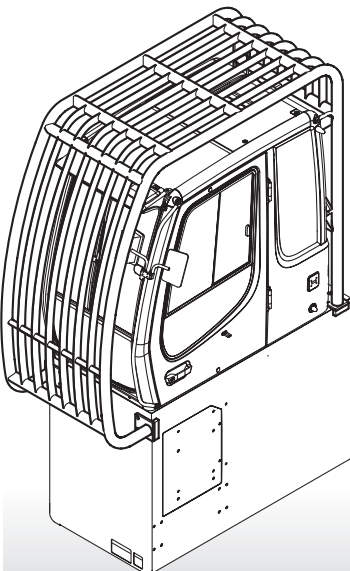


Hydraulic Cab Elevation (Parallelogram)

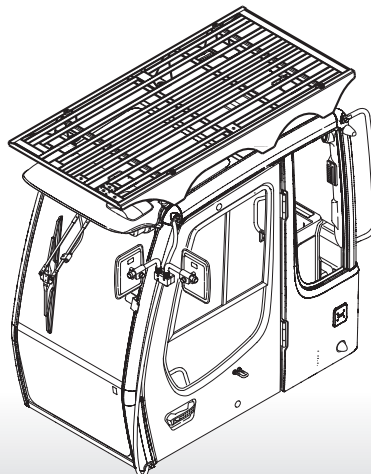
B1	2660 mm
B2	5160 mm
C1	3160 mm
C2	5660 mm
D1	1370 mm
D2	1615 mm
E	3075 mm

The parallelogram cab raiser allows the operator to choose his field of view between dimensions B1 and B2. For a transport height lower than C1 the shell of the cab can be removed. The overall height is then E.

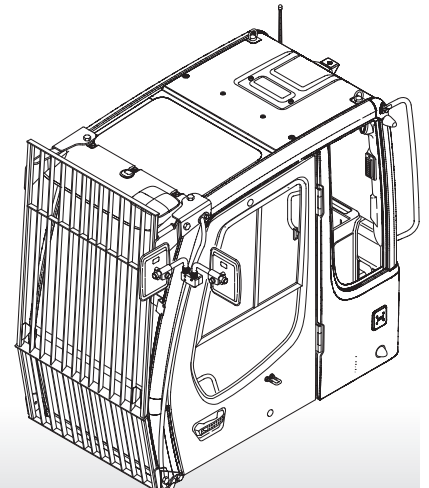
Cab guard for cab with elevation



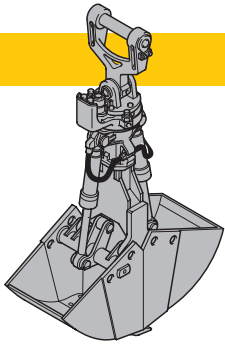
Grille above



Grilles in front



Variety of Tools

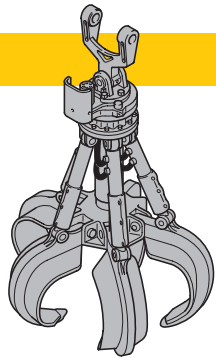


Shells for Loose Material

Clamshell Model 10 B

Shells for loose material with cutting edge (without teeth)

Cutting width of shells	mm	1000	1500	1800
Capacity	m ³	1,00	1,50	1,80
For loose material, specific weight up to	t/m ³	1,5	1,5	1,5
Total weight	kg	1040	1180	1425



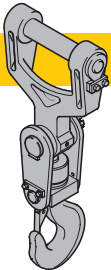
Multiple Tine Grapples

open tines

semi-closed tines

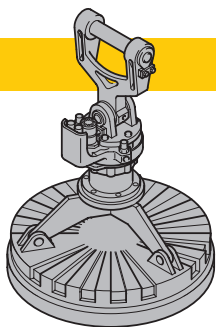
closed tines

Grapple model 64 (4 tines)	Capacity	m ³	0,40	0,60	0,40	0,60	0,40	0,60
	Weight	kg	845	1130	1055	1330	1060	1520
Grapple model 65 (5 tines)	Capacity	m ³	0,40	0,60	0,40	0,60	0,40	0,60
	Weight	kg	1150	1230	1285	1415	1325	1520



Crane Hook with Suspension

Max. load	t	12,5
Height with suspension	mm	930
Total weight	kg	96



Magnet Devices/Lifting Magnets

Generator	kW	13	13
Electromagnets with Suspension			
Power	kW	4,5	6
Diameter of magnet	mm	1050	1200
Height with suspension	mm	1100	1100
Weight	kg	750	1190

Equipment



Undercarriage

	S	O
Two circuit travel brake with accumulator	•	
Travel motor protection		•
Outrigger cylinder rod guards	•	•
Creeper speed electrically switchable from cab	•	
New tires	•	
Service free parking brake	•	
Independent outrigger control		•
Choice of tires		•
Auto check valve directly on each stabilizer cylinder	•	
Proportional power steering with mechanical back up	•	
Customized colors		•
Two lockable storage boxes	•	
Lockable storage box additional		
Two-speed power shift transmission	•	



Uppercarriage

	S	O
Electric fuel tank filler pump		•
Maintenance-free swing brake lock	•	•
Handrails, Non slip surfaces	•	
Main switch for electric circuit	•	
Engine hood with lift help	•	
Pedal controlled positioning swing brake		•
Reverse travel warning system		•
Sound insulation	•	
Customized colors		•
Pin lock upper/lower		•
Maintenance-free HD-batteries	•	
Extended tool kit		•
Lockable tool box	•	
Tool kit	•	



Hydraulics

	S	O
Hydraulic tank shut-off valve	•	
Extra hydr. control for hydr. swivel	•	
Pressure compensation	•	
Hook up for pressure checks	•	
Pressure storage for controlled lowering of attachments with engine turned off	•	
Filter with partial micro filtration (5 µm)	•	
Electronic pump regulation	•	
Stepless mode system (ECO)	•	
Flow compensation	•	
Four mixed modes, can also be adjusted	•	
Full flow micro filtration	•	•
Bio degradable hydraulic oil	•	
Tool Control		•
Additional hydraulic circuits		•



Engine

	S	O
Turbo charger	•	
Unit pump system	•	
Cold start aid		•
Sensor controlled engine idling	•	
Air filter with pre-cleaner main- and safety element	•	



Operator's Cab

	S	O
Storage tray		•
Displays for engine operating condition		•
Mechanical hour meters, readable from outside the cab		•
Roof hatch		•
All-round adjustable roof vent		
6-way adjustable seat	•	
Airpressure operator seat with heating and head-rest		•
Seat and consoles independently adjustable		•
Extinguisher		•
Removable customized foot mat	•	
Dome light		•
Rigid or hydraulic cab elevation		•
Cab heater with defroster	•	
Cloth hook		•
Air conditioning		•
Electric cool box		•
Steering wheel adjustable		•
Bullet proof window (fixed installation – can not be opened)		•
Stereo radio		•
Preparation for radio installation		•
Rain hood over front window opening	•	
Beacon		•
All tinted windows	•	
Door with sliding window	•	
Optical and acoustical warning if outriggers are not fully retracted		•
Auxiliary heating		•
Sun shade		•
Sun roller blind		•
Electronic drive away lock		•
Wiper/washer	•	
Cigarette lighter and ashtray	•	
Additional flood lights		•



Attachment

	S	O
Flood lights on boom		•
Hydr. lines for clam operation in sticks		•
Industrial-type gooseneck sticks with remote hydraulic pin puller		•
Sealed pivots		•
Safety lift hook		•
Liebherr line of clams		•
Liebherr semi-automatic central lubrication system	•	
Liebherr fully-automatic central lubrication system		•
Likufix		•
Safety check valves on hoist cylinder	•	
Safety check valves on stick cylinder	•	
Hose quick connection	•	
Hydraulic or manual quick change tool adapter		•
Customized colors		•
Special buckets and other tools		•
Overload warning device		•
Two way valves for bucket/clam use		•
Locking of connections for clam operation		•
Cylinders with shock absorber	•	

S = Standard, O = Option

Options and/or special attachments, supplied by vendors other than Liebherr, are only to be installed with the knowledge and approval of Liebherr to retain warranty.

